

# 3D laser confinement in the eye assisted by adaptive optics: retinal imaging and surgery

by Antoine CHEN

Supervisor: Michel Paques

Institut de la Vision

Co-supervisor: Serge Meimon

ONERA

Coordinator: Cyril Petit

ONERA

Coordinator: David Pureur

Quantel Medical



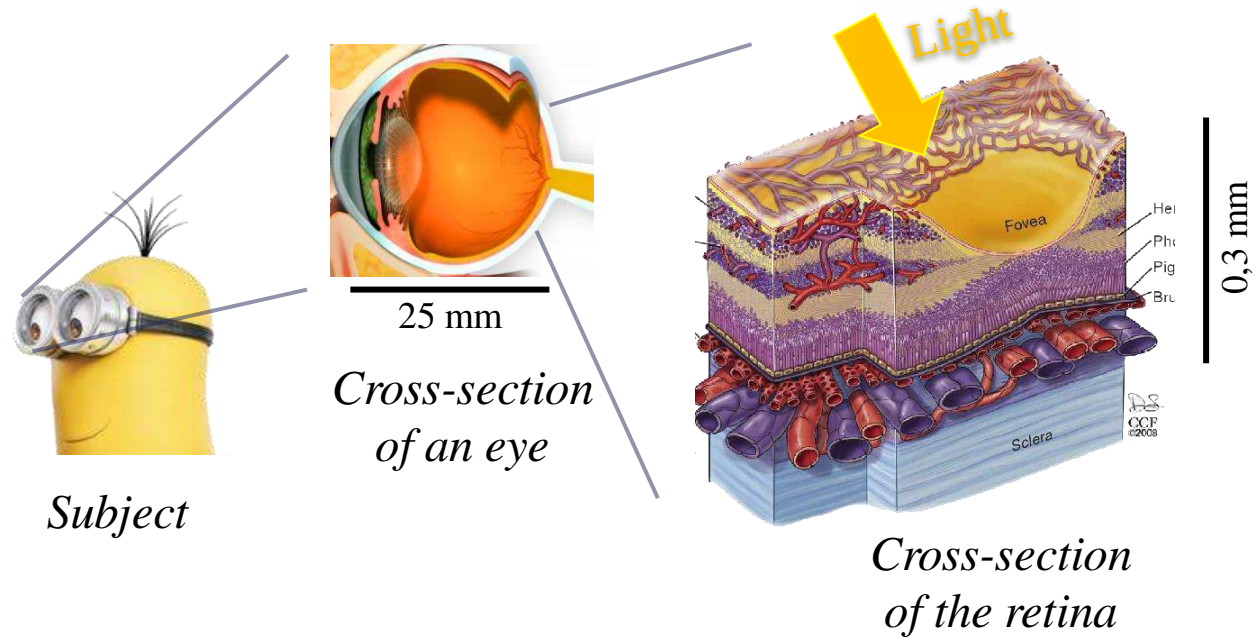
ED394 : Physiologie,  
physiopathologie,  
thérapeutique



## **3D laser confinement in the eye assisted by adaptive optics: retinal imaging and surgery**

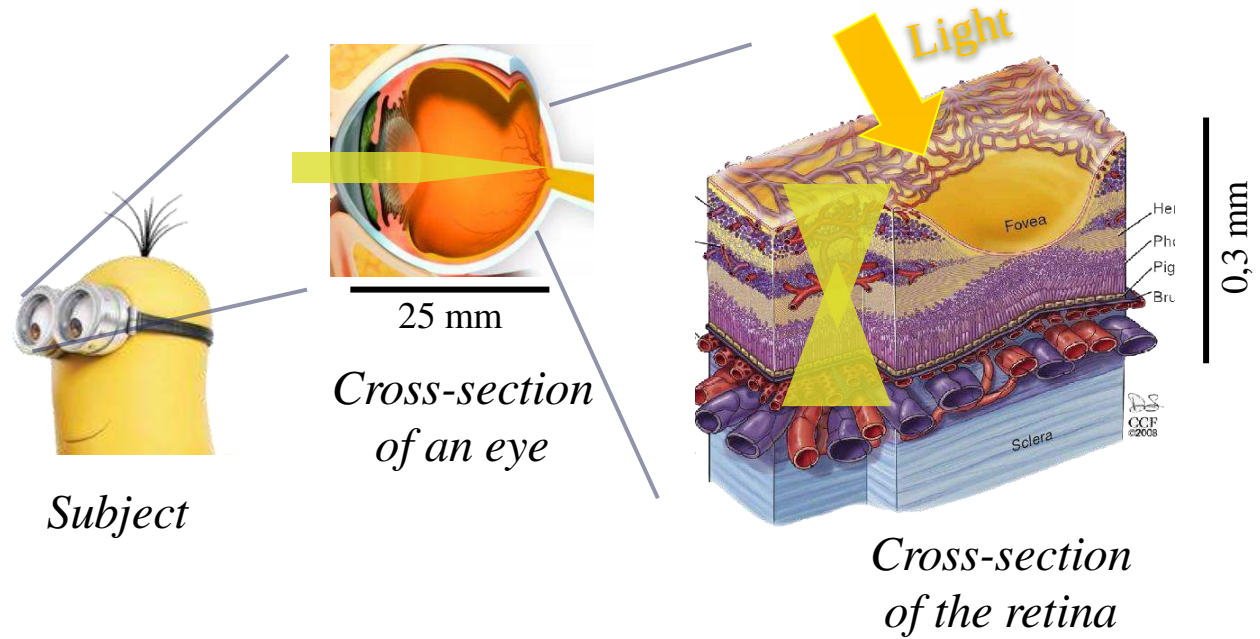
# Introduction

## 3D laser confinement in the eye assisted by adaptive optics: retinal imaging and surgery



# Introduction

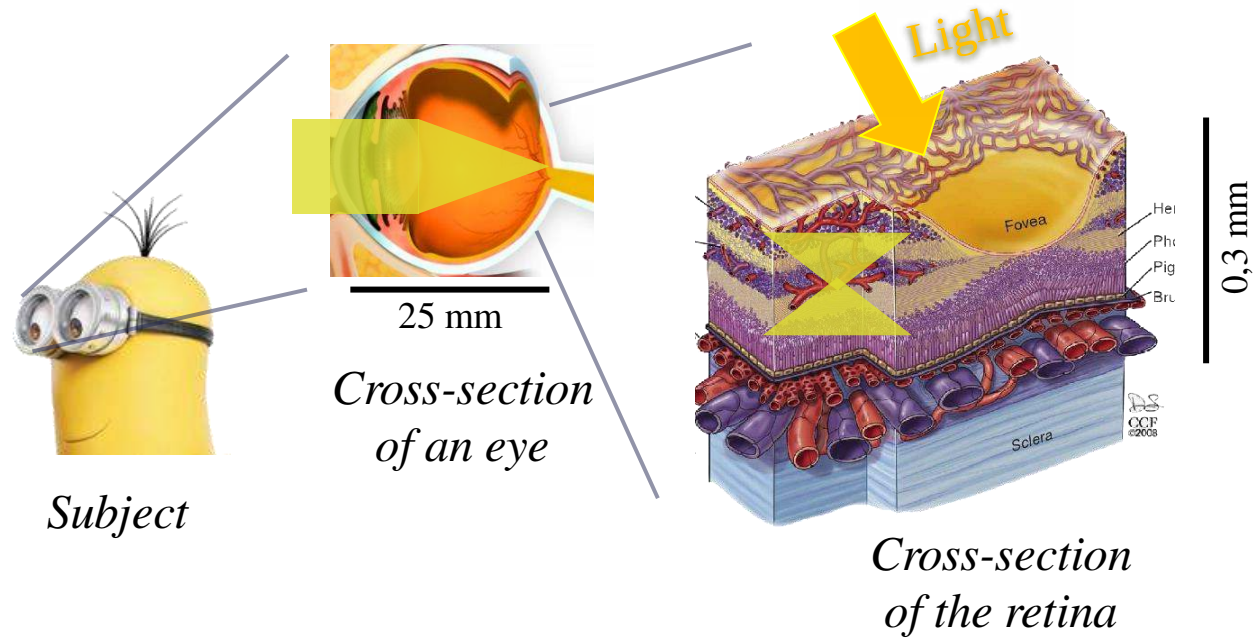
## 3D laser confinement in the eye assisted by adaptive optics: retinal imaging and surgery





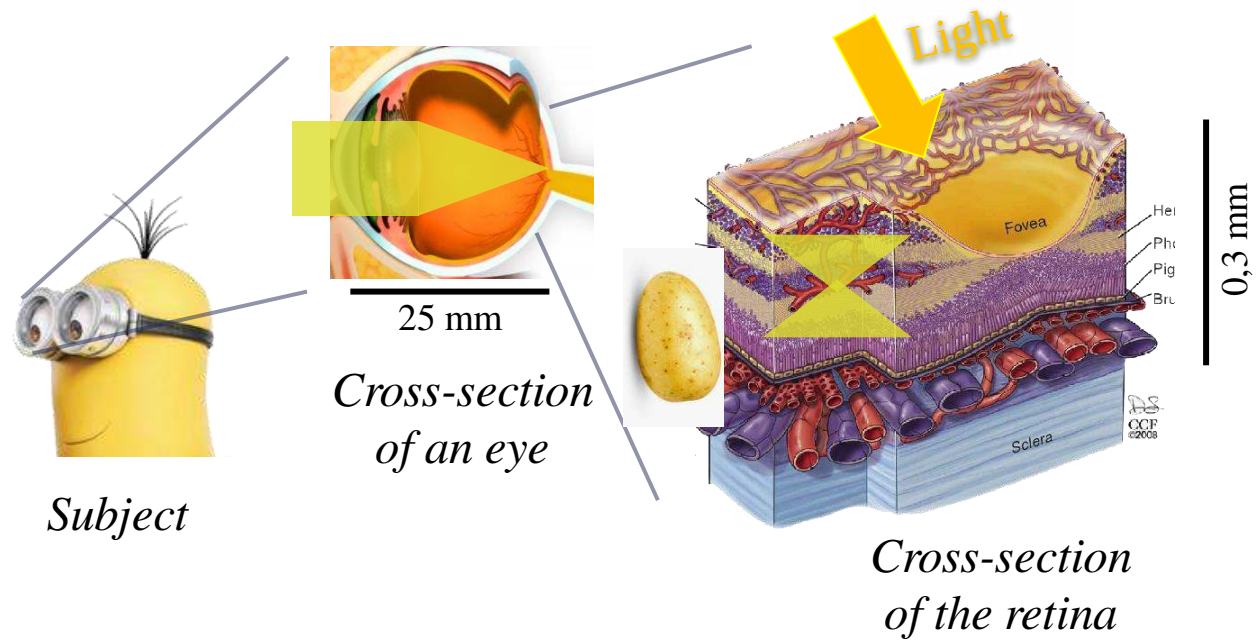
# Introduction

## 3D laser confinement in the eye assisted by adaptive optics: retinal imaging and surgery



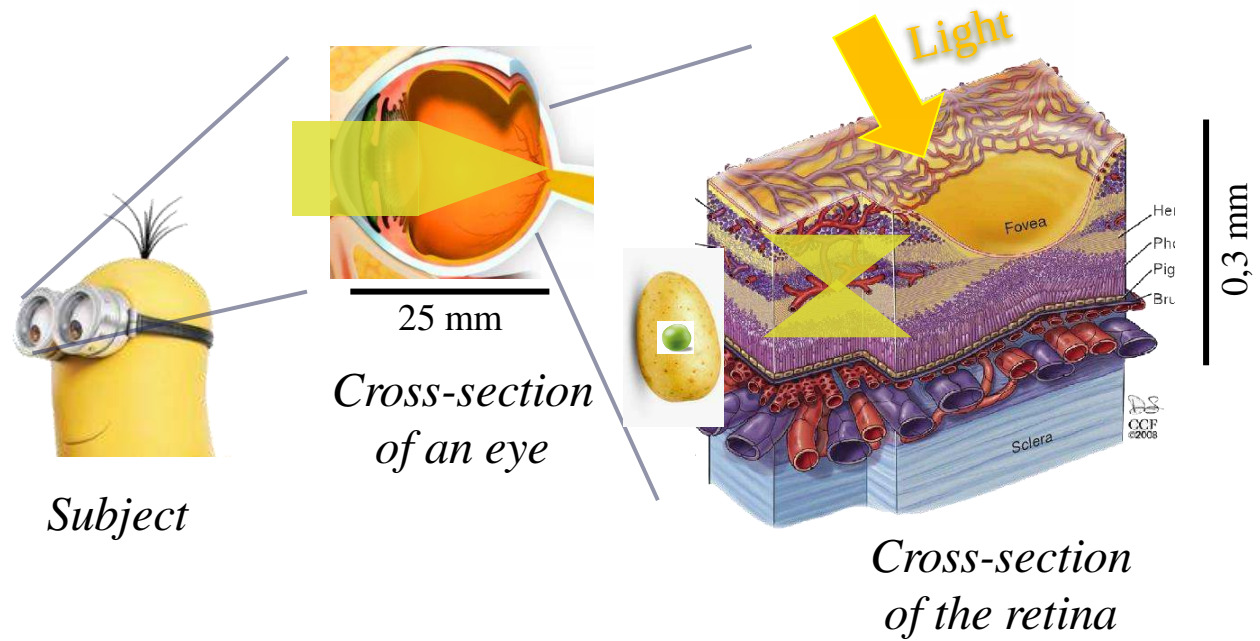
# Introduction

## 3D laser confinement in the eye assisted by adaptive optics: retinal imaging and surgery



# Introduction

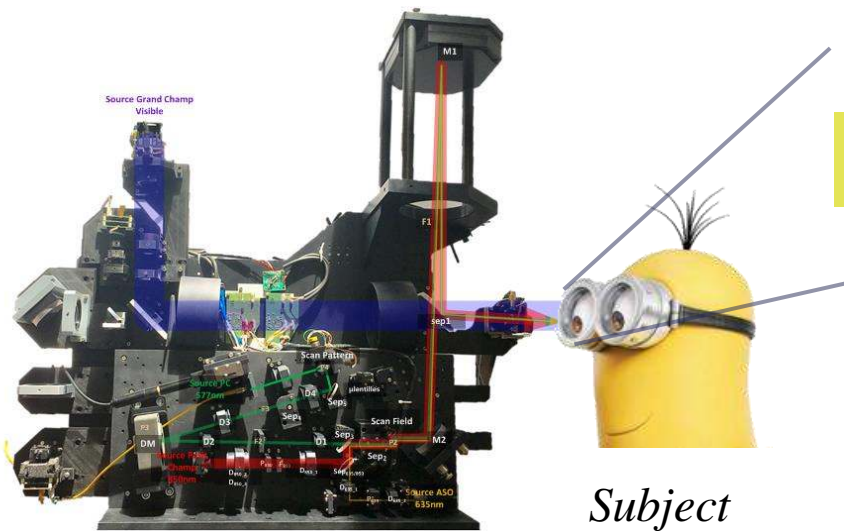
## 3D laser confinement in the eye assisted by adaptive optics: retinal imaging and surgery



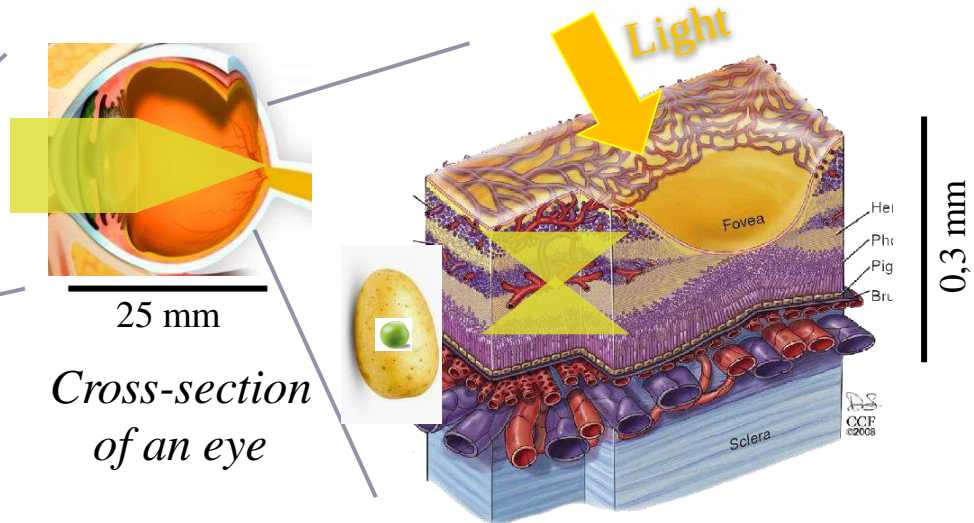


# Introduction

# 3D laser confinement in the eye assisted by adaptive optics: retinal imaging and surgery



*CLOVIS3D project*

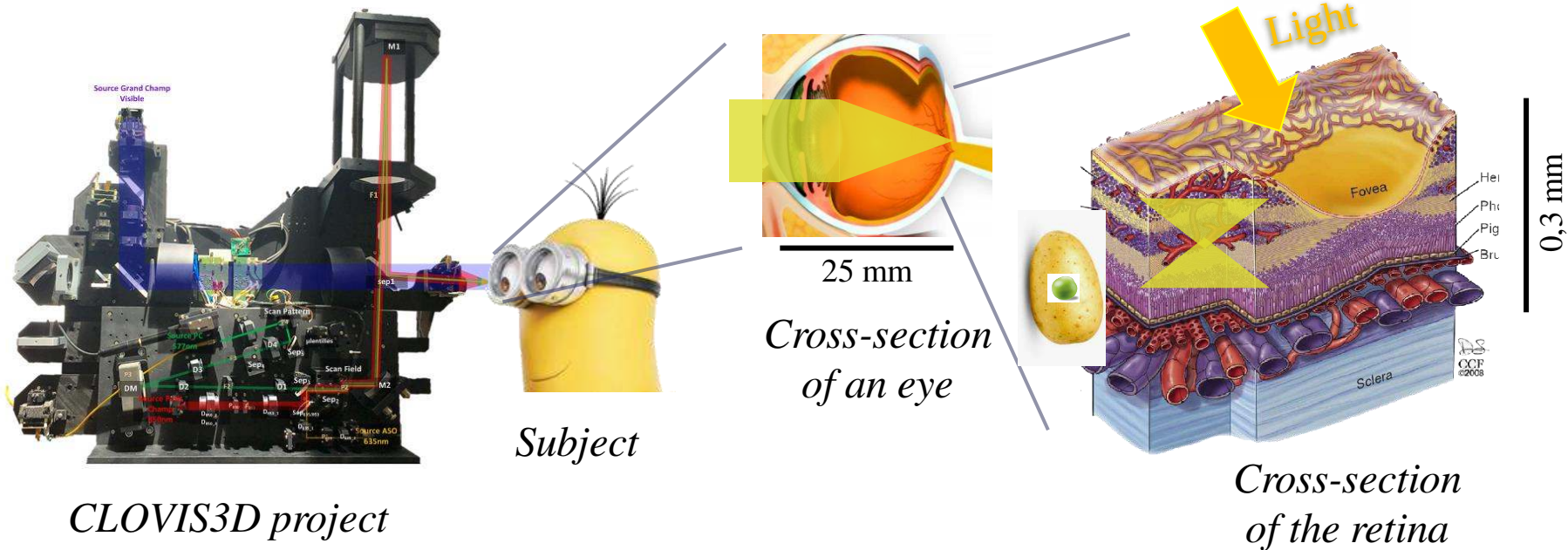


*Cross-section  
of the retina*



# Introduction

## 3D laser confinement in the eye assisted by adaptive optics: retinal imaging and surgery



**WHY?**  
Medical concerns

**HOW?**  
Concept of AO for  
confinement – CLOVIS3D

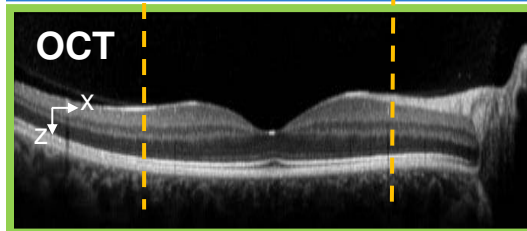
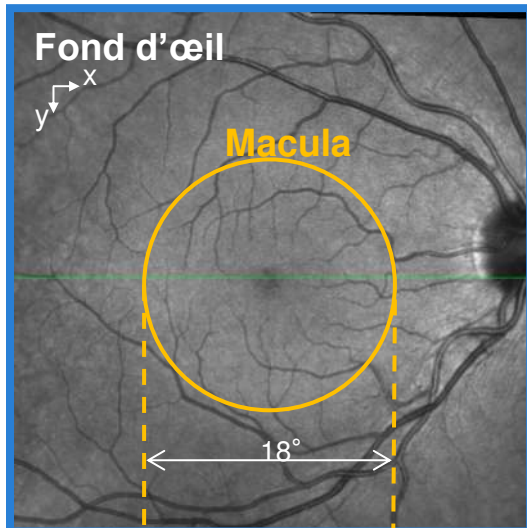
**WORK**

# *Medical concerns*

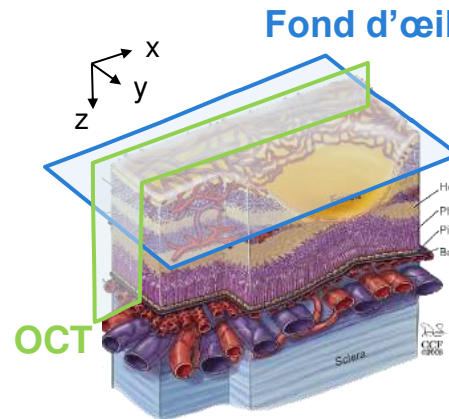
One of first cause of viual impairment or blindness is due to **Diabetic Macular Edema**, pathology affecting **vessels** of retina (1-2 millions en France).

# Medical concerns

One of first cause of visual impairment or blindness is due to **Diabetic Macular Edema**, pathology affecting **vessels** of retina (1-2 millions en France).

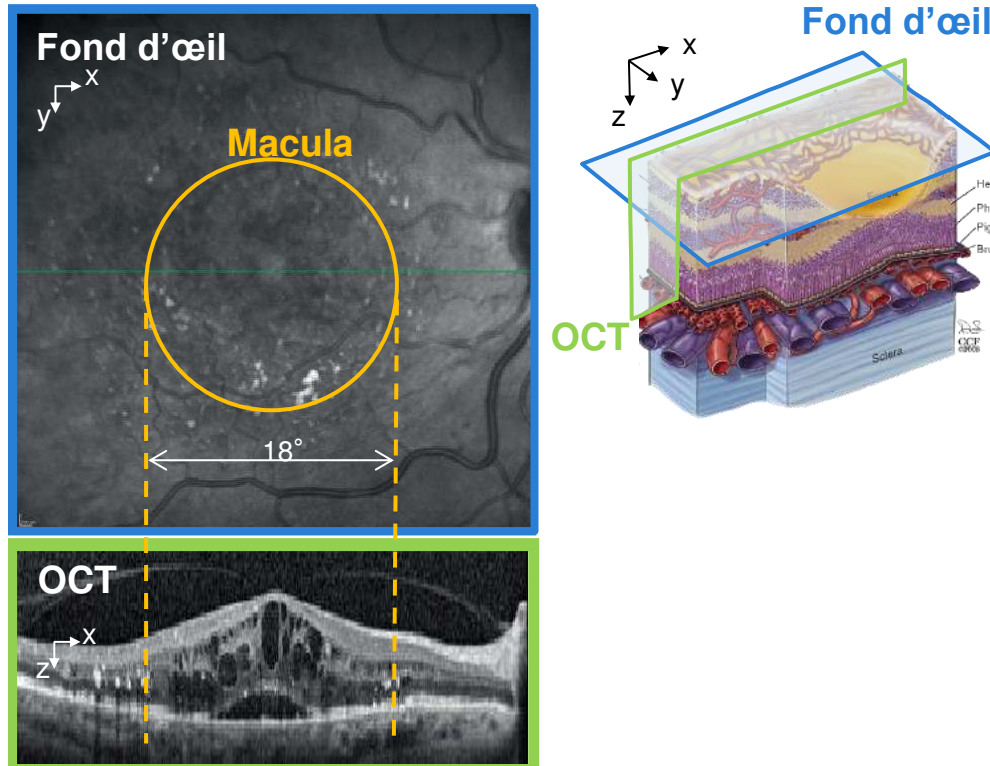


Sound retina



# Medical concerns

One of first cause of visual impairment or blindness is due to **Diabetic Macular Edema**, pathology affecting **vessels** of retina (1-2 millions en France).

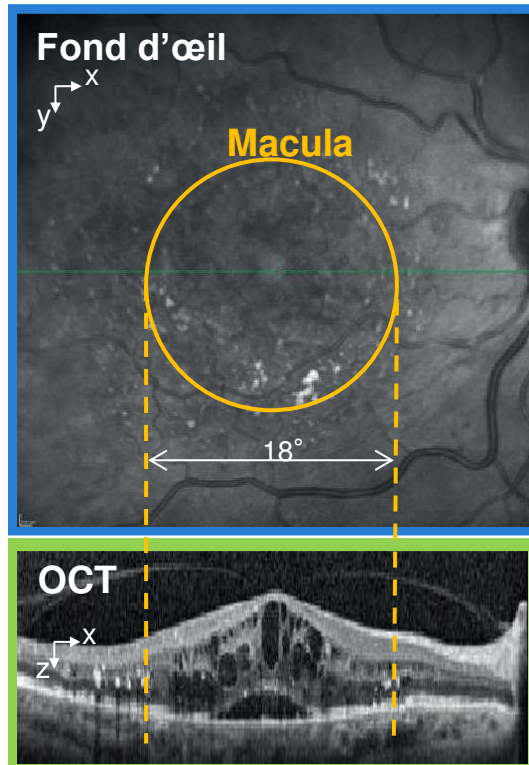


Affected retina

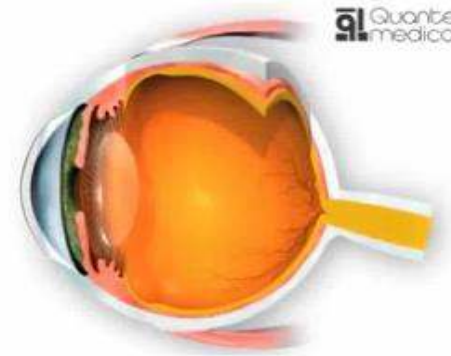
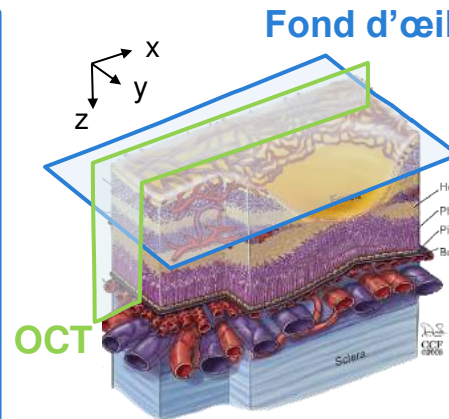


# Medical concerns

One of first cause of visual impairment or blindness is due to **Diabetic Macular Edema**, pathology affecting **vessels** of retina (1-2 millions en France).

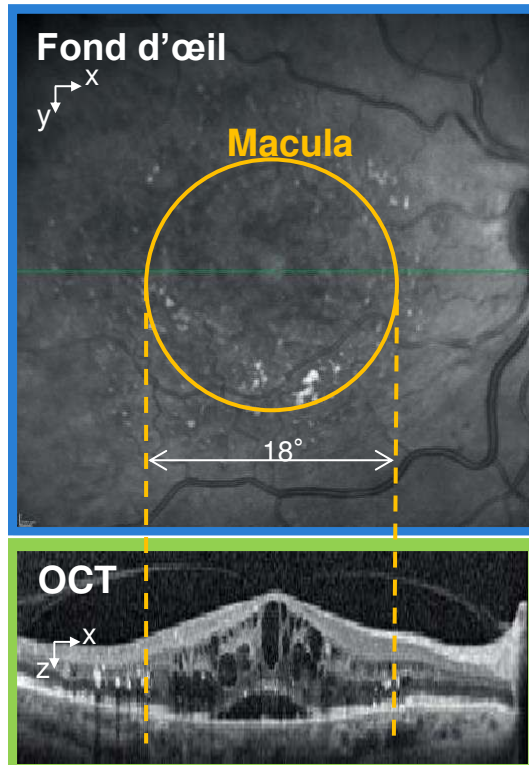


Affected retina

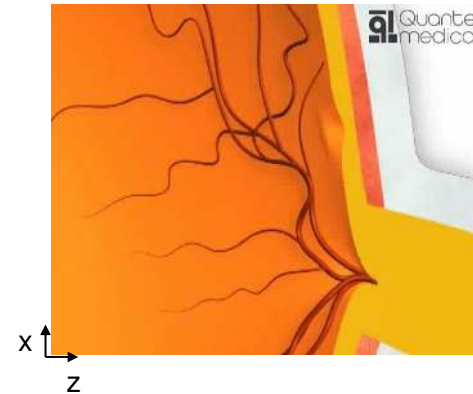
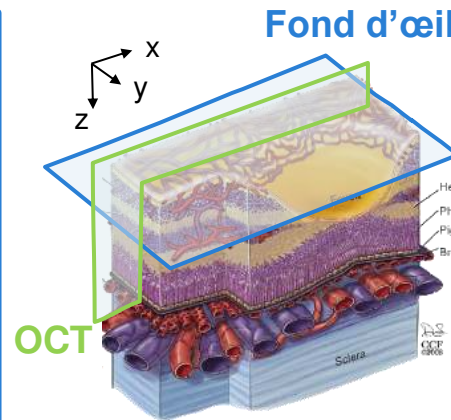


# Medical concerns

One of first cause of visual impairment or blindness is due to **Diabetic Macular Edema**, pathology affecting **vessels** of retina (1-2 millions en France).

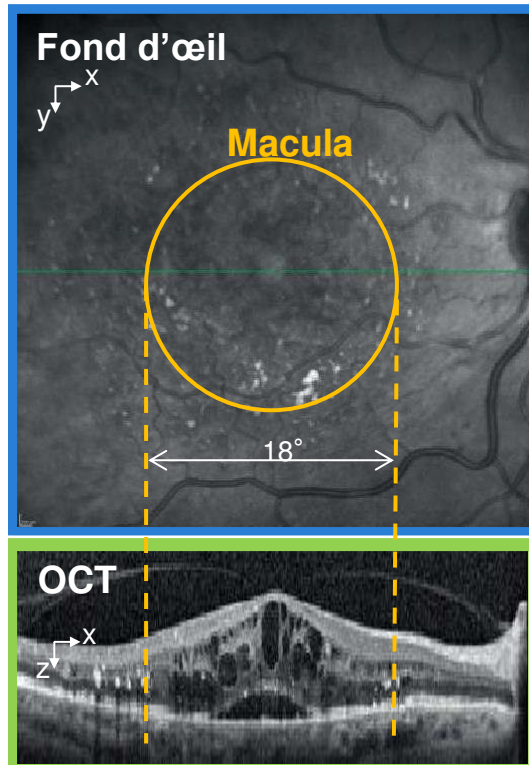


Affected retina

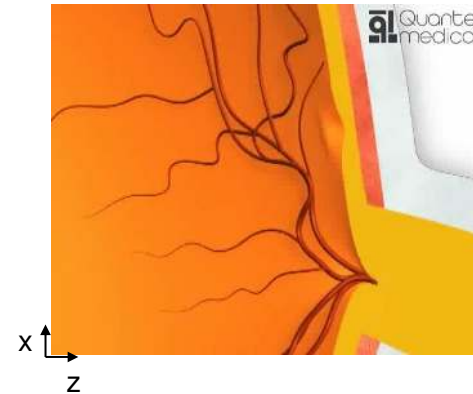
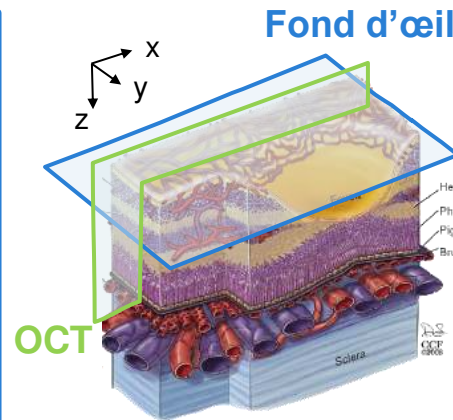


# Medical concerns

One of first cause of visual impairment or blindness is due to **Diabetic Macular Edema**, pathology affecting **vessels** of retina (1-2 millions en France).



Affected retina



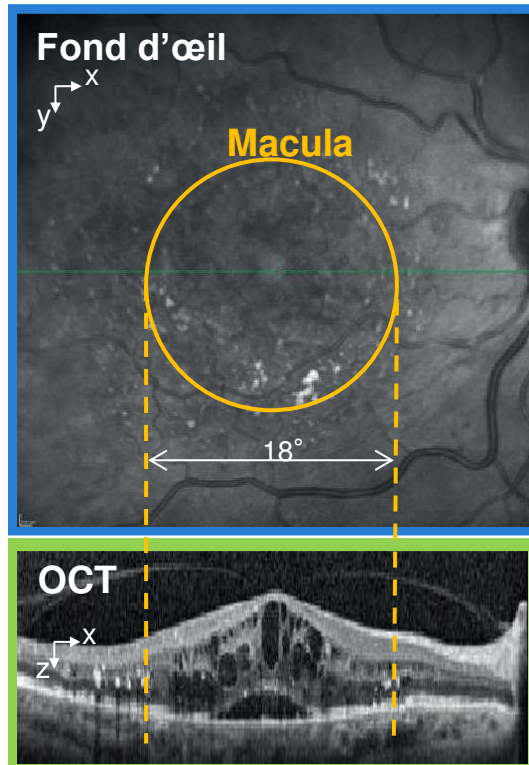
Typical evolution of a capillary macroaneurysm



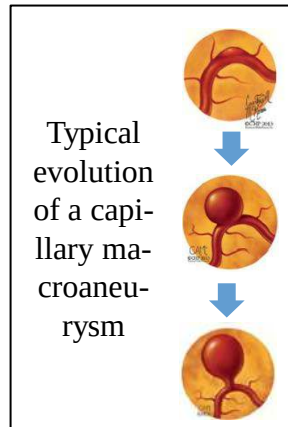
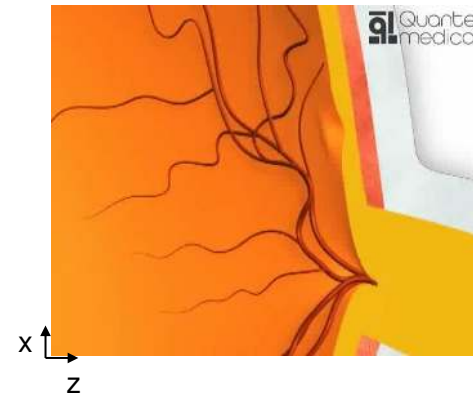
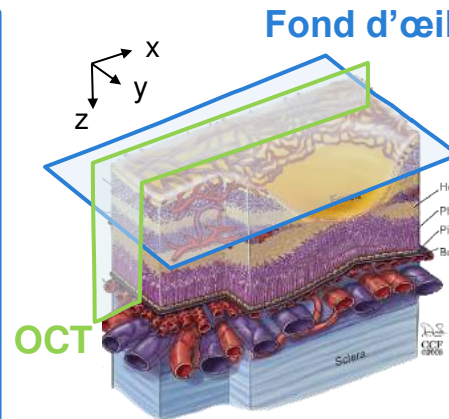


# Medical concerns

One of first cause of visual impairment or blindness is due to **Diabetic Macular Edema**, pathology affecting **vessels** of retina (1-2 millions en France).



Affected retina

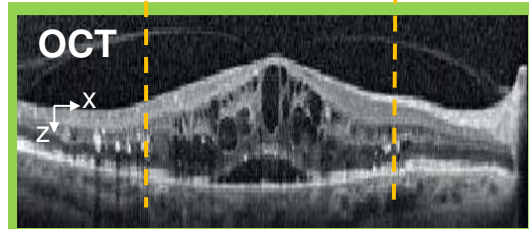
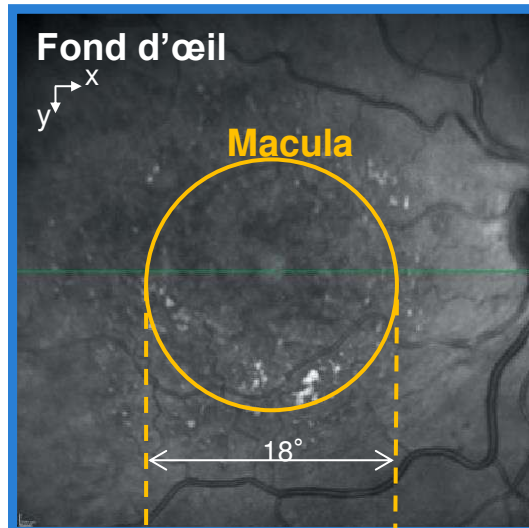


[Images : Paques et al.]

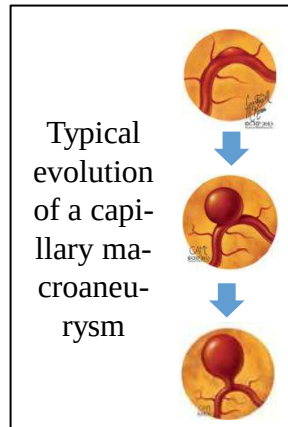
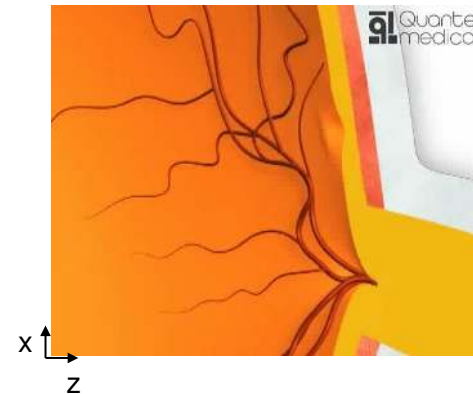
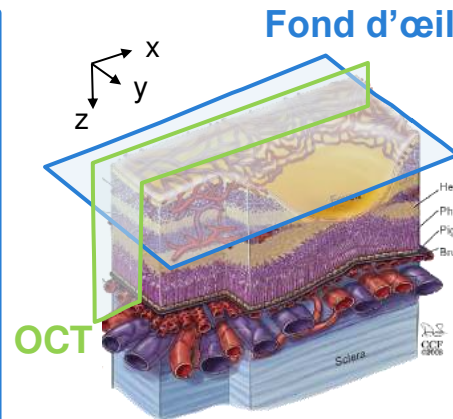


# Medical concerns

One of first cause of visual impairment or blindness is due to **Diabetic Macular Edema**, pathology affecting **vessels** of retina (1-2 millions en France).



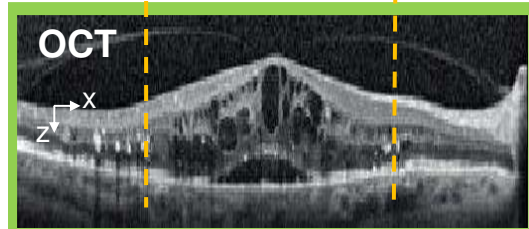
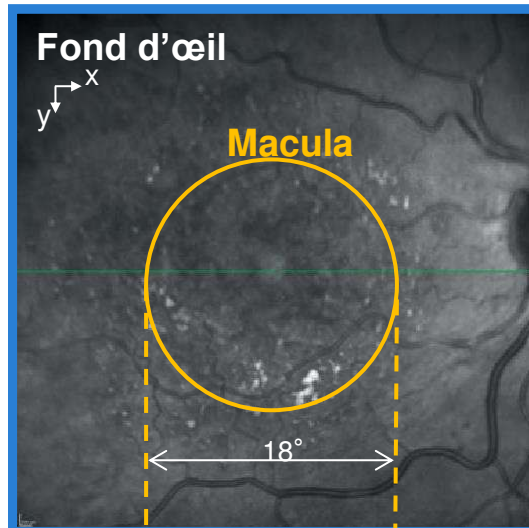
Affected retina



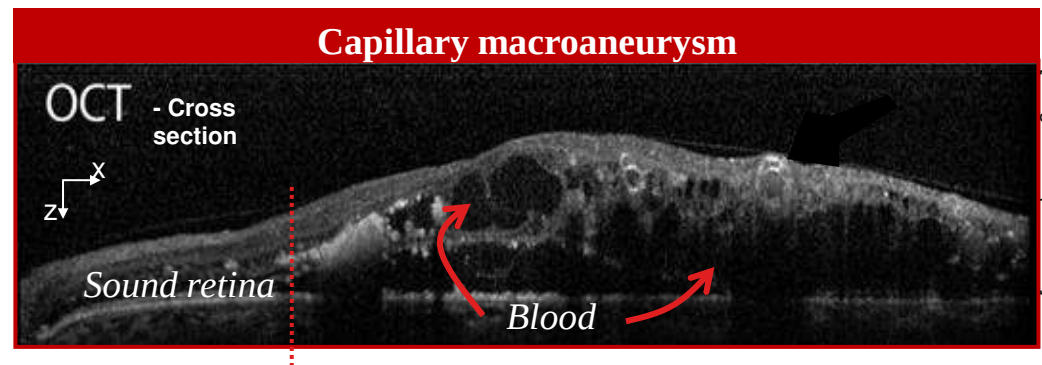
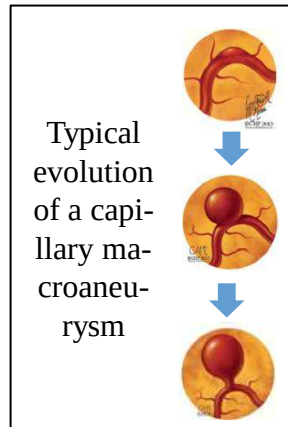
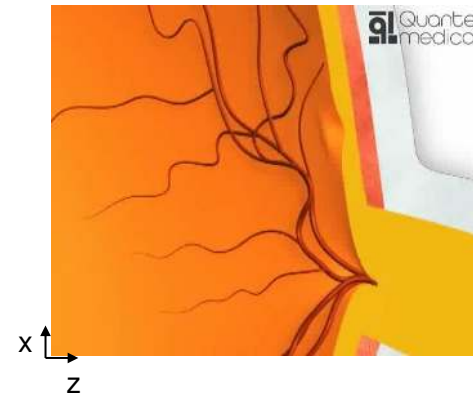
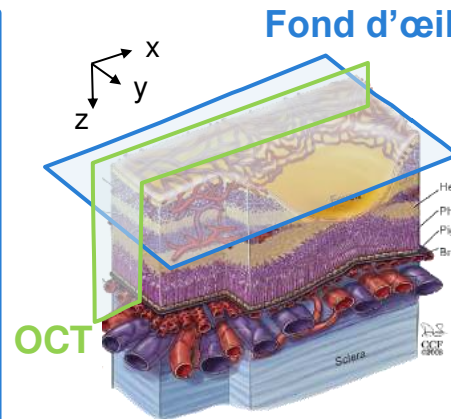
[Images : Paques et al.]

# Medical concerns

One of first cause of visual impairment or blindness is due to **Diabetic Macular Edema**, pathology affecting **vessels** of retina (1-2 millions en France).



Affected retina

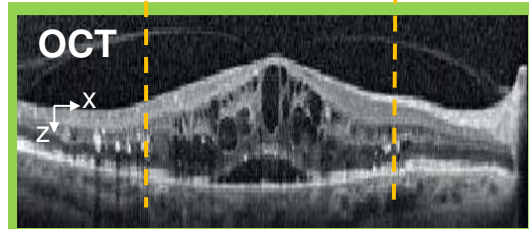
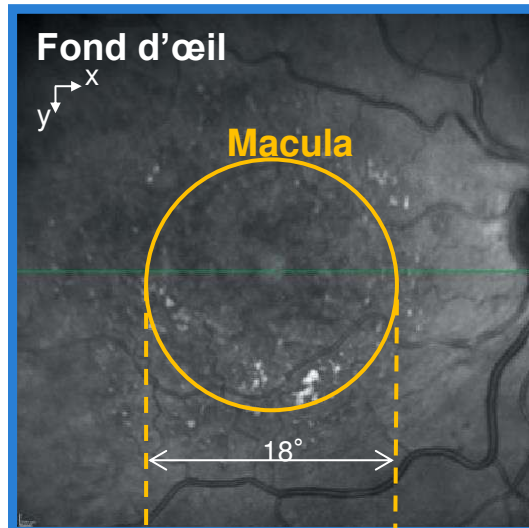


[Images : Paques et al.]

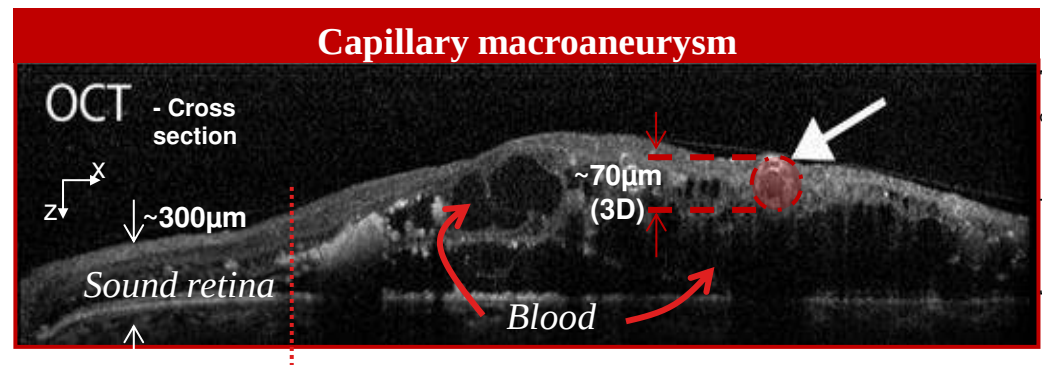
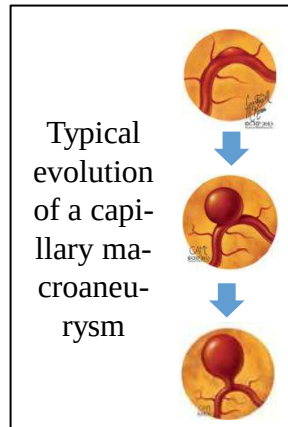
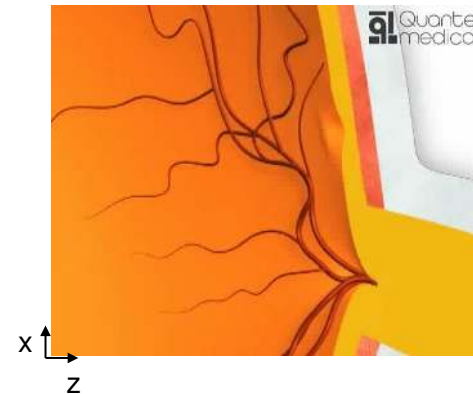
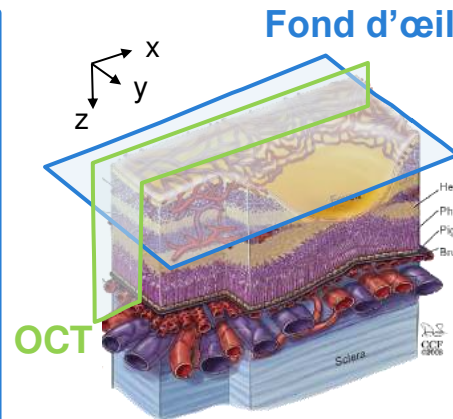


# Medical concerns

One of first cause of visual impairment or blindness is due to **Diabetic Macular Edema**, pathology affecting **vessels** of retina (1-2 millions en France).



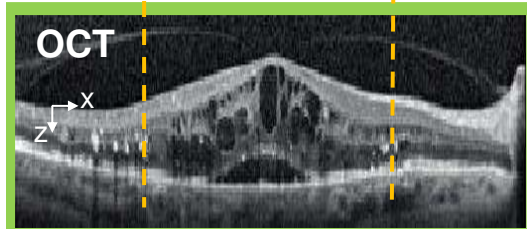
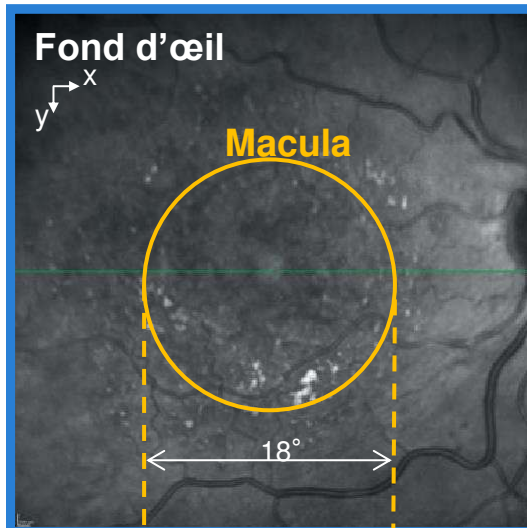
Affected retina



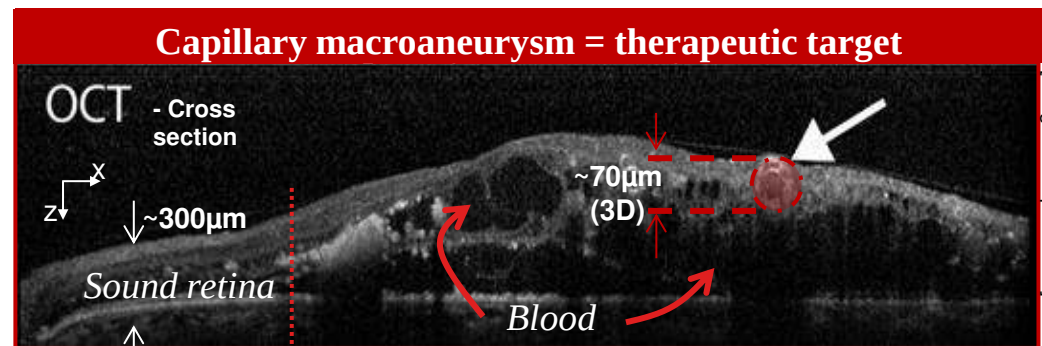
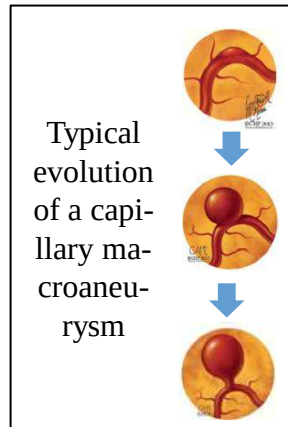
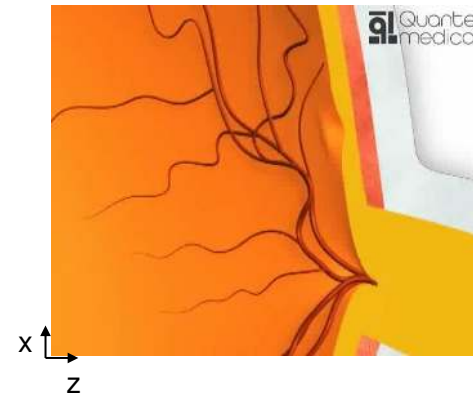
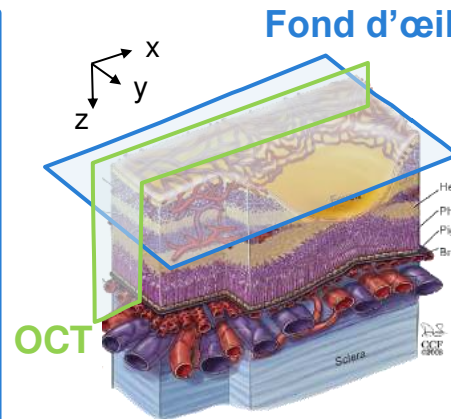
[Images : Paques et al.]

# Medical concerns

One of first cause of visual impairment or blindness is due to **Diabetic Macular Edema**, pathology affecting **vessels** of retina (1-2 millions en France).



Affected retina



[Images : Paques et al.]

Treatment

**Laser photocoagulation: cauterise vessels**



# Problems and requirement

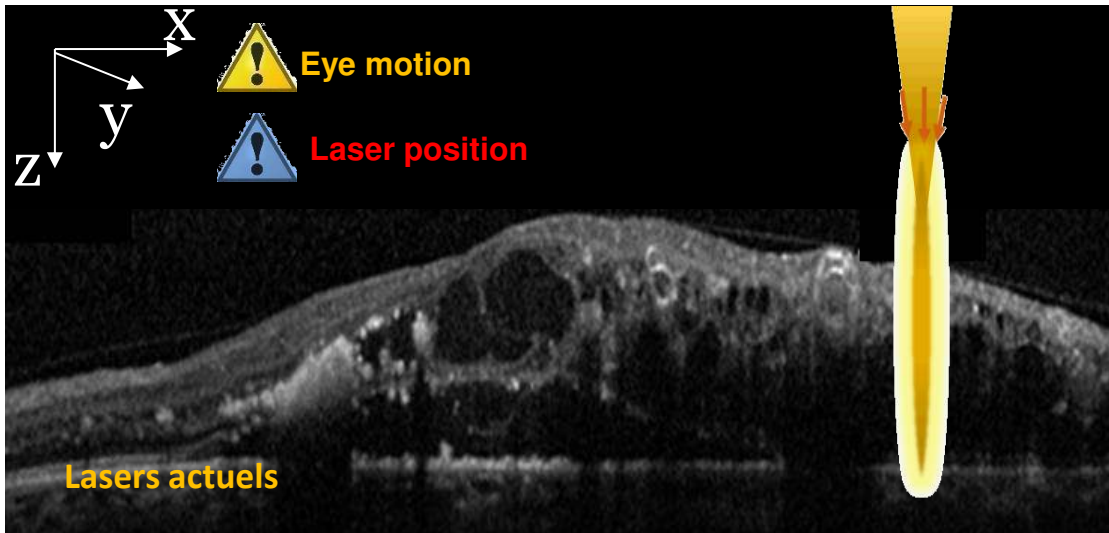


Precisely aim (in 3D) pathological areas and save sound tissues

No axial  
confinement

No depth control

Eye movements



# Problems and requirement



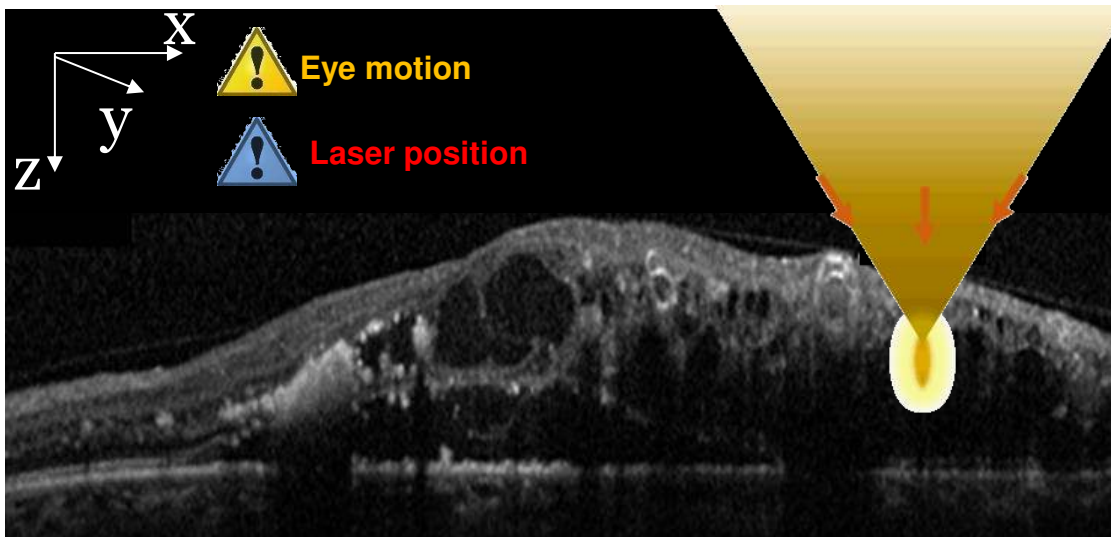
Precisely aim (in 3D) pathological areas and save sound tissues

1

3D confinement

No depth control

Eye movements



# Problems and requirement



Precisely aim (in 3D) pathological areas and save sound tissues

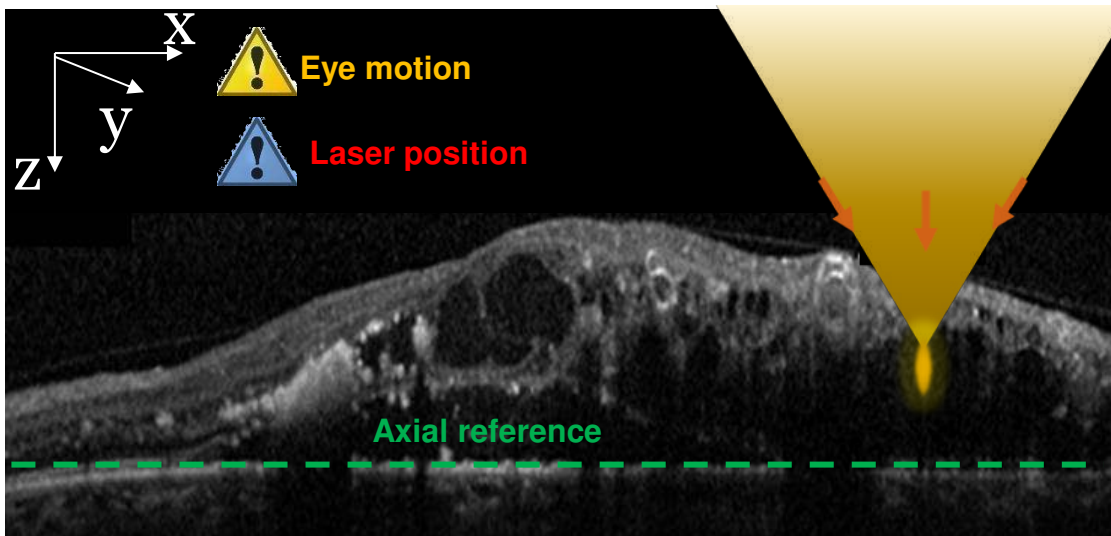
1

3D confinement

2

Depth stabilisation

Eye movements



# Problems and requirement



Precisely aim (in 3D) pathological areas and save sound tissues

1

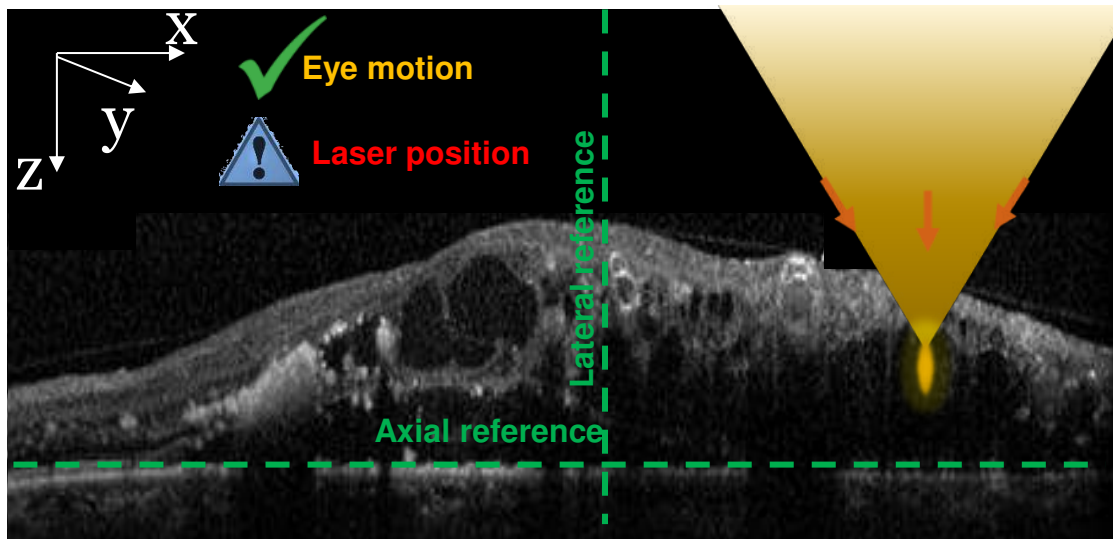
3D confinement

2

Depth stabilisation

3

2D stabilisation





# Problems and requirement



Precisely aim (in 3D) pathological areas and save sound tissues

1

3D confinement

2

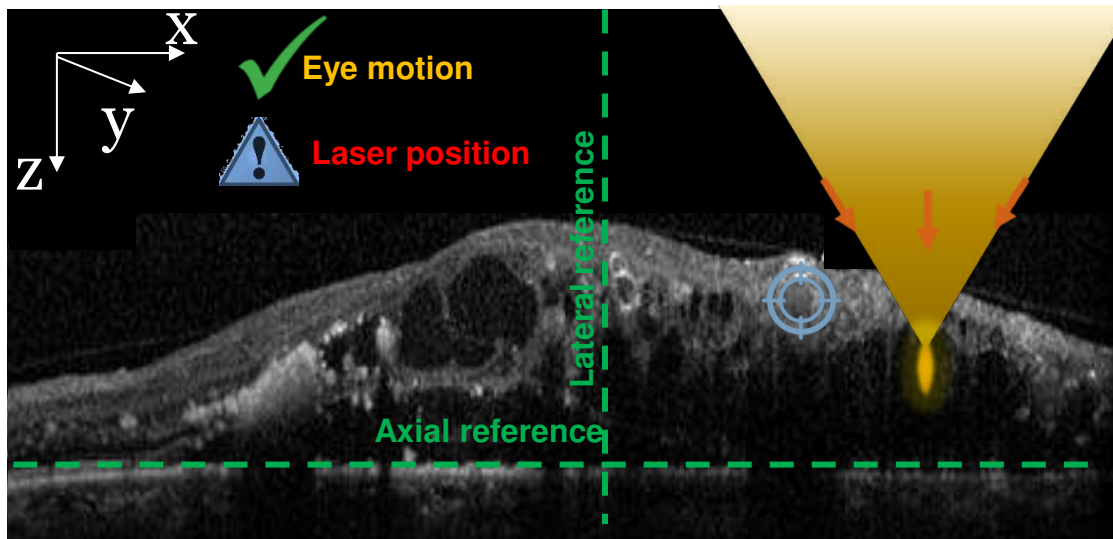
Depth stabilisation

3

2D stabilisation

4

Target identification



# Problems and requirement



Precisely aim (in 3D) pathological areas and save sound tissues

1

3D confinement

2

Depth stabilisation

3

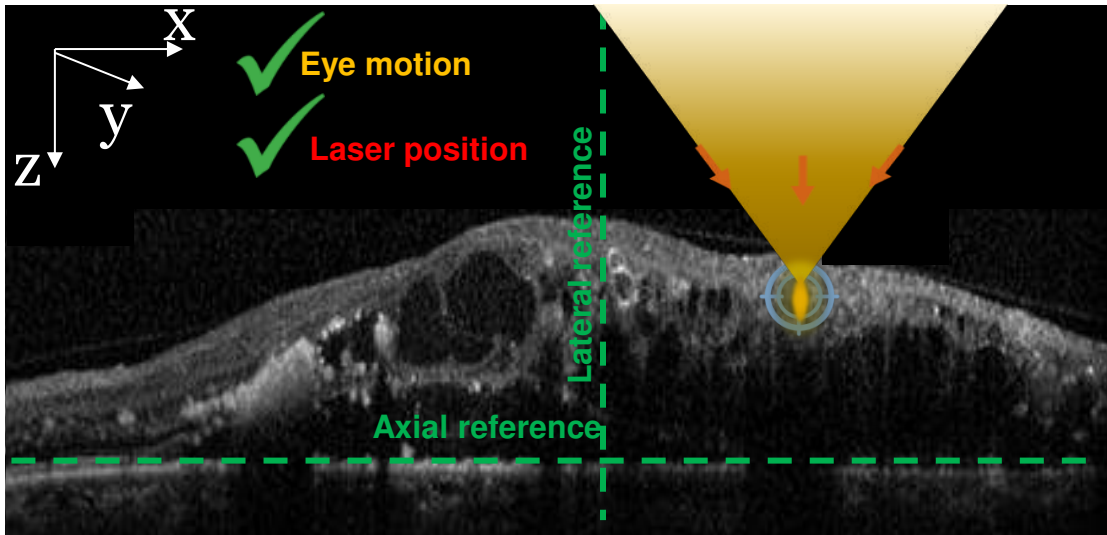
2D stabilisation

4

Target identification

5

3D laser positioning



# Problems and requirement



Precisely aim (in 3D) pathological areas and save sound tissues

1

3D confinement

2

Depth stabilisation

3

2D stabilisation

4

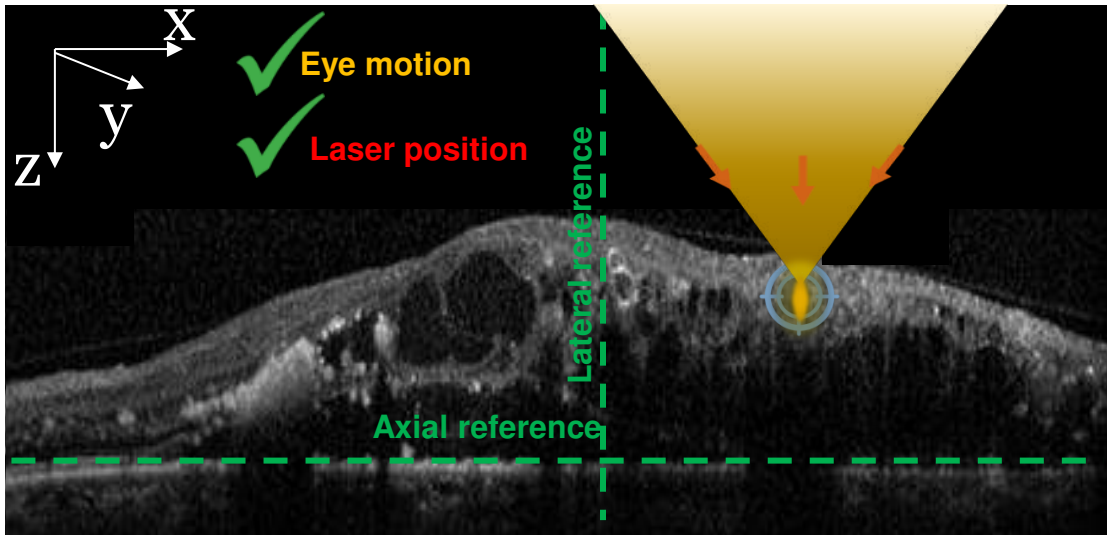
Target identification

5

3D laser positioning



**Laser impact**





# Problems and requirement



Precisely aim (in 3D) pathological areas and save sound tissues

1

3D confinement

2

Depth stabilisation

3

2D stabilisation

4

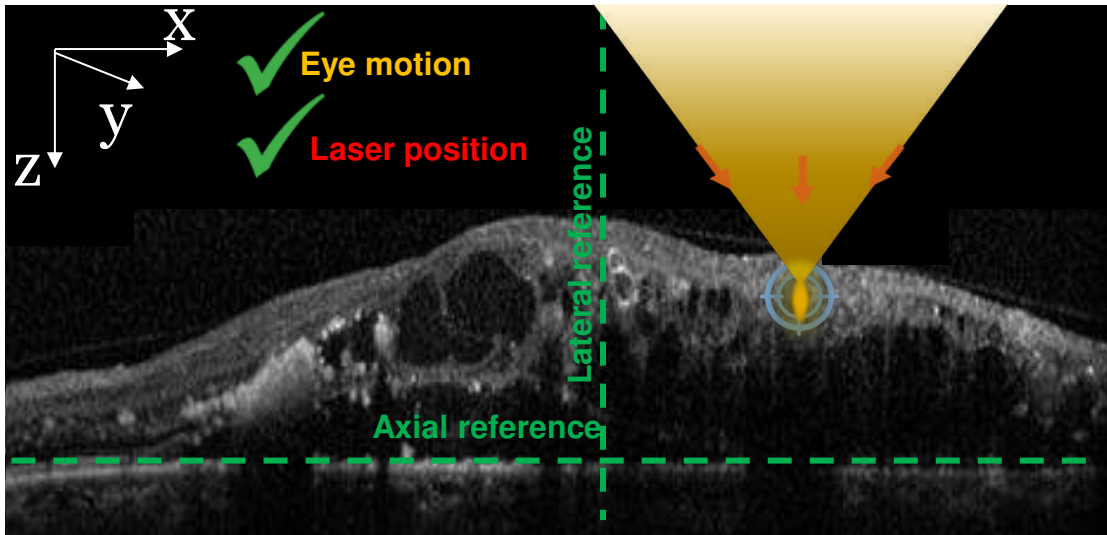
Target identification

5

3D laser positioning



Laser impact



# Problems and requirement



Precisely aim (in 3D) pathological areas and save sound tissues

1

3D confinement

2

Depth stabilisation

3

2D stabilisation

4

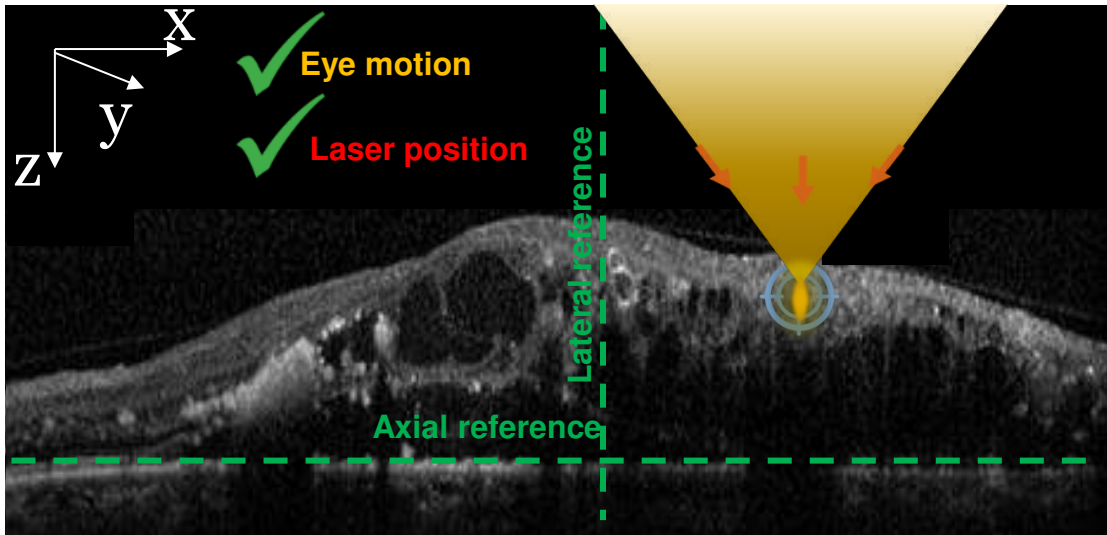
Target identification

5

3D laser positioning



**Laser impact**



CLOVIS3D project objectives

# Problems and requirement



Precisely aim (in 3D) pathological areas and save sound tissues

1

3D confinement

2

Depth stabilisation

3

2D stabilisation

4

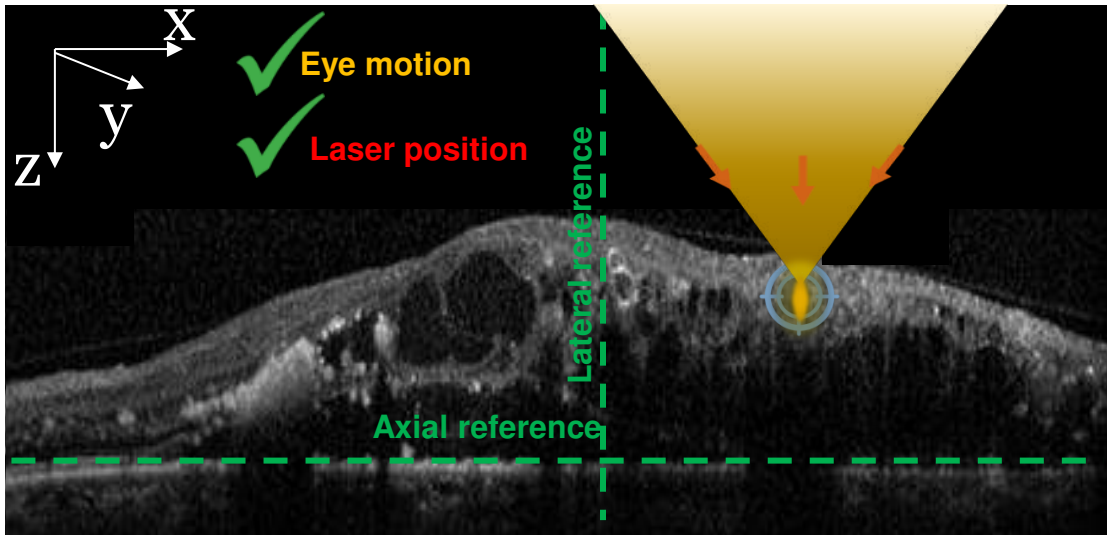
Target identification

5

3D laser positioning



**Laser impact**



CLOVIS3D project objectives

**How?  
Tools?**



# *Confinement and ocular aberrations*

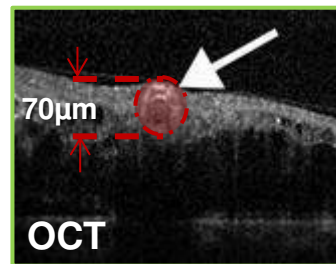
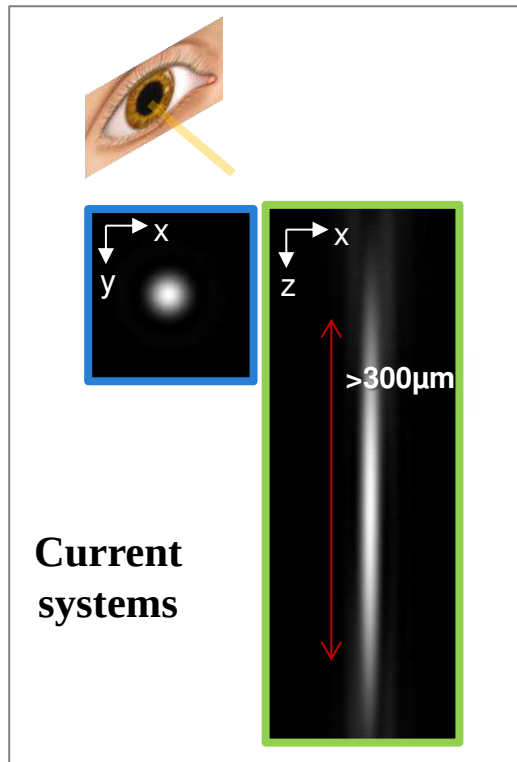
1

3D confinement

# Confinement and ocular aberrations

1

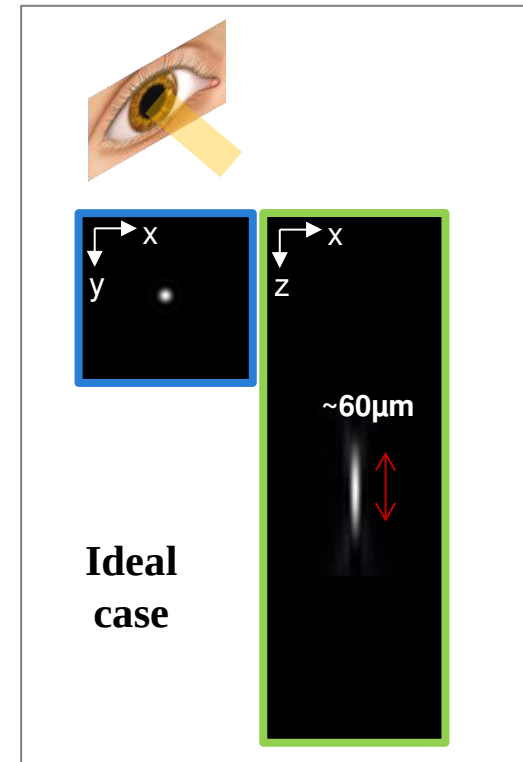
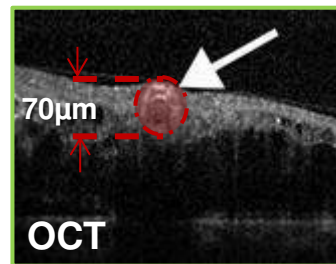
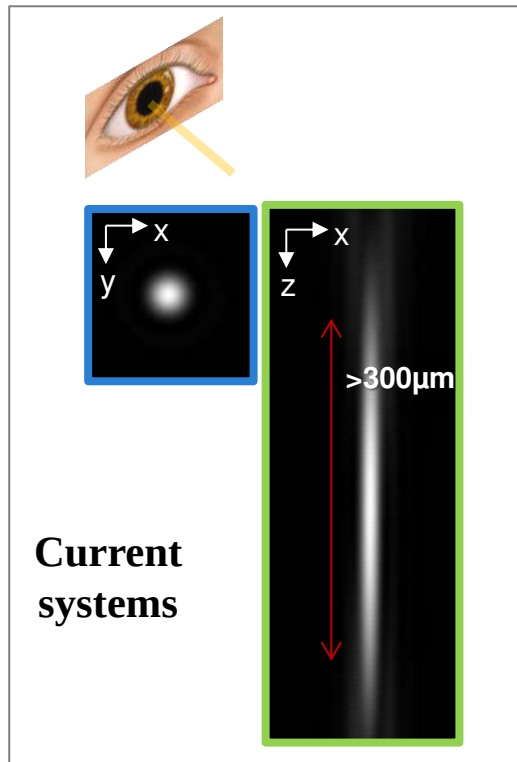
3D confinement



# Confinement and ocular aberrations

1

3D confinement





# Confinement and ocular aberrations

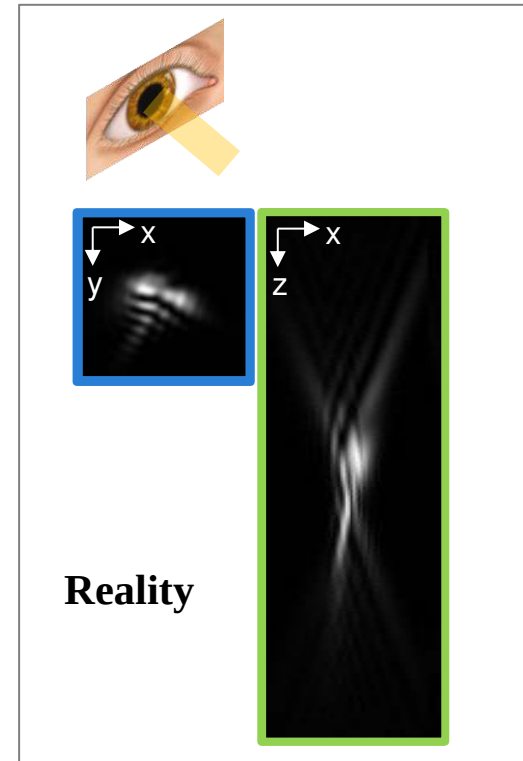
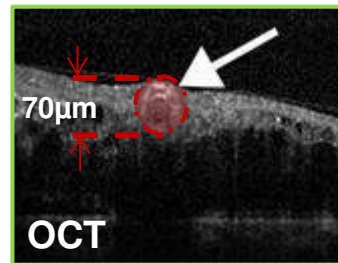
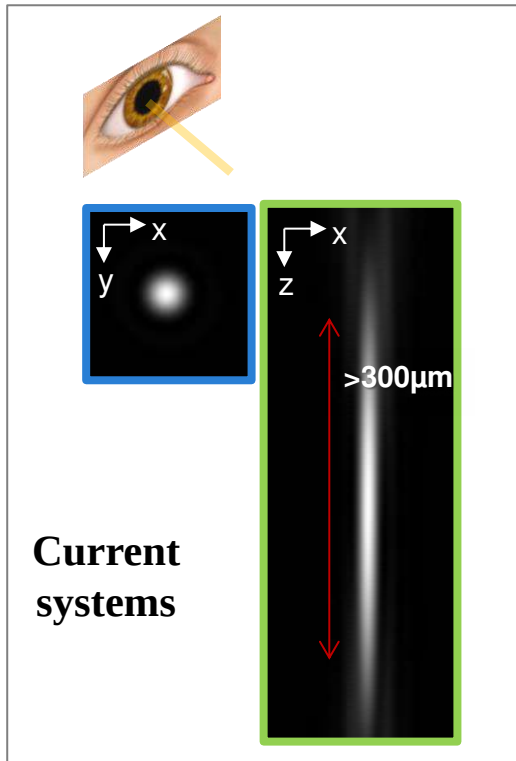
Static ocular aberrations: myopia, hypermetropia, astigmatism



1

3D confinement

Dynamic ocular aberrations (e.g. tear film)



# Confinement and ocular aberrations

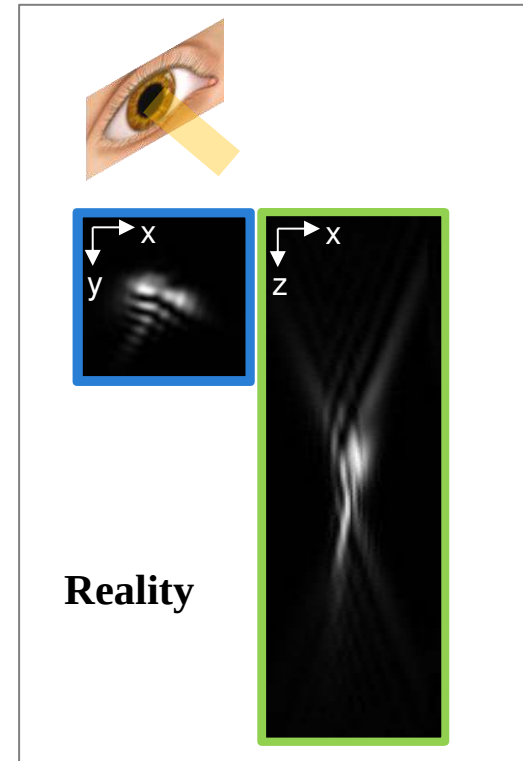
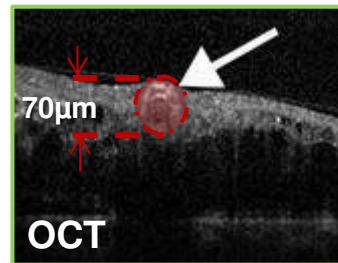
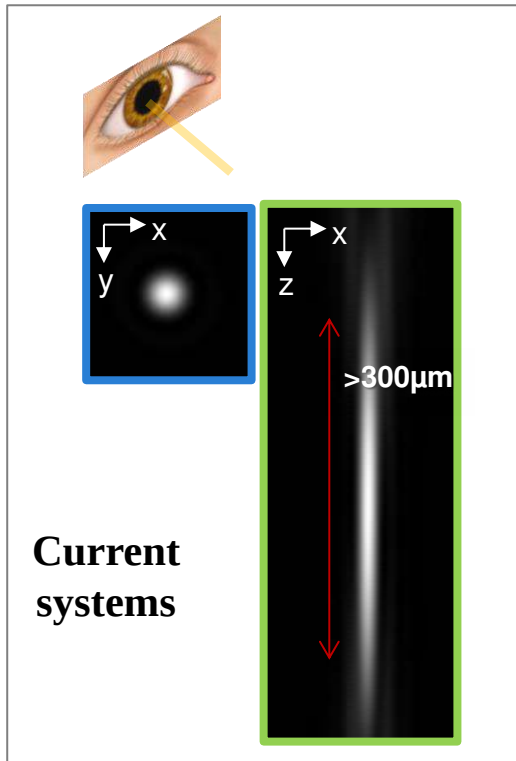
Static ocular aberrations: myopia, hypermetropia, astigmatism



1

3D confinement

Dynamic ocular aberrations (e.g. tear film)



Lost of confinement / resolution!

# Confinement and ocular aberrations

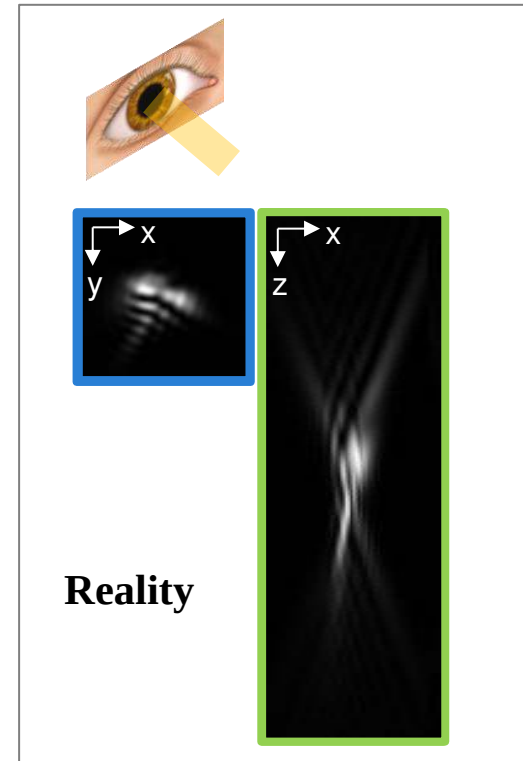
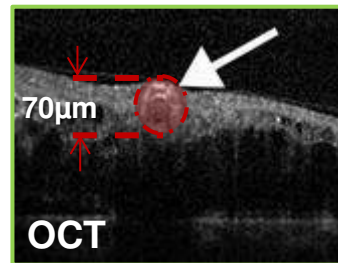
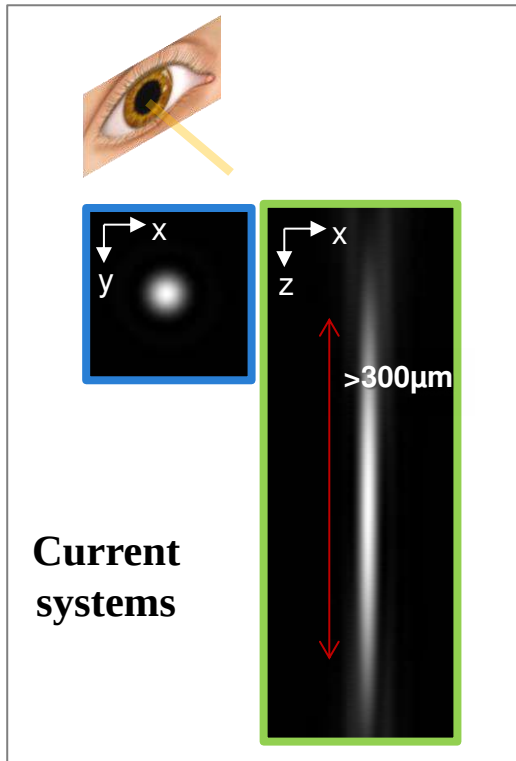
Static ocular aberrations: myopia, hypermetropia, astigmatism



1

3D confinement

Dynamic ocular aberrations (e.g. tear film)

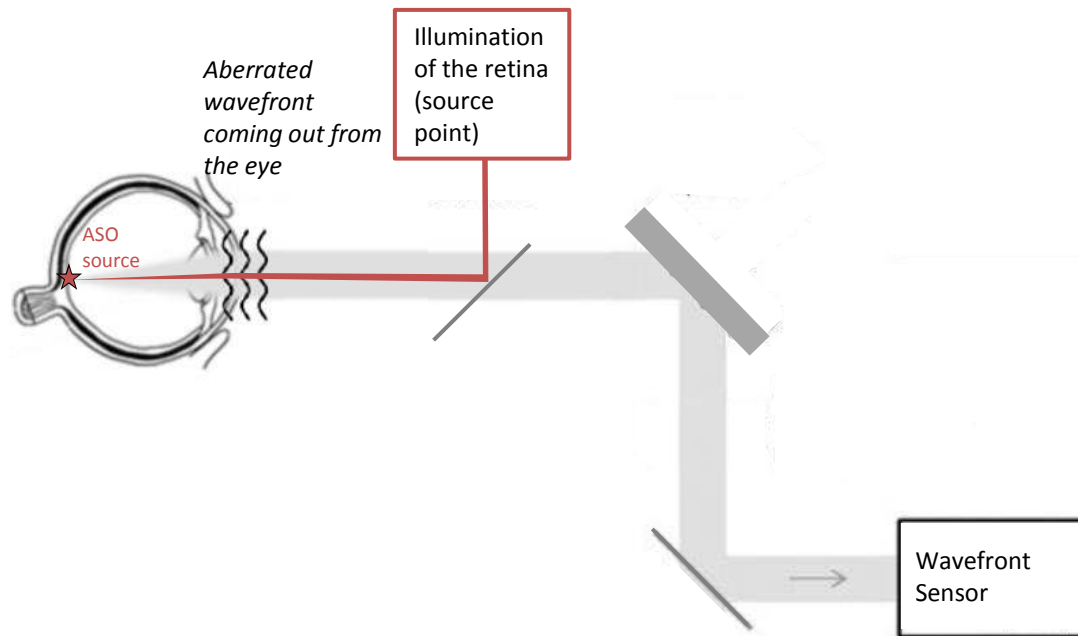


Lost of confinement / resolution!

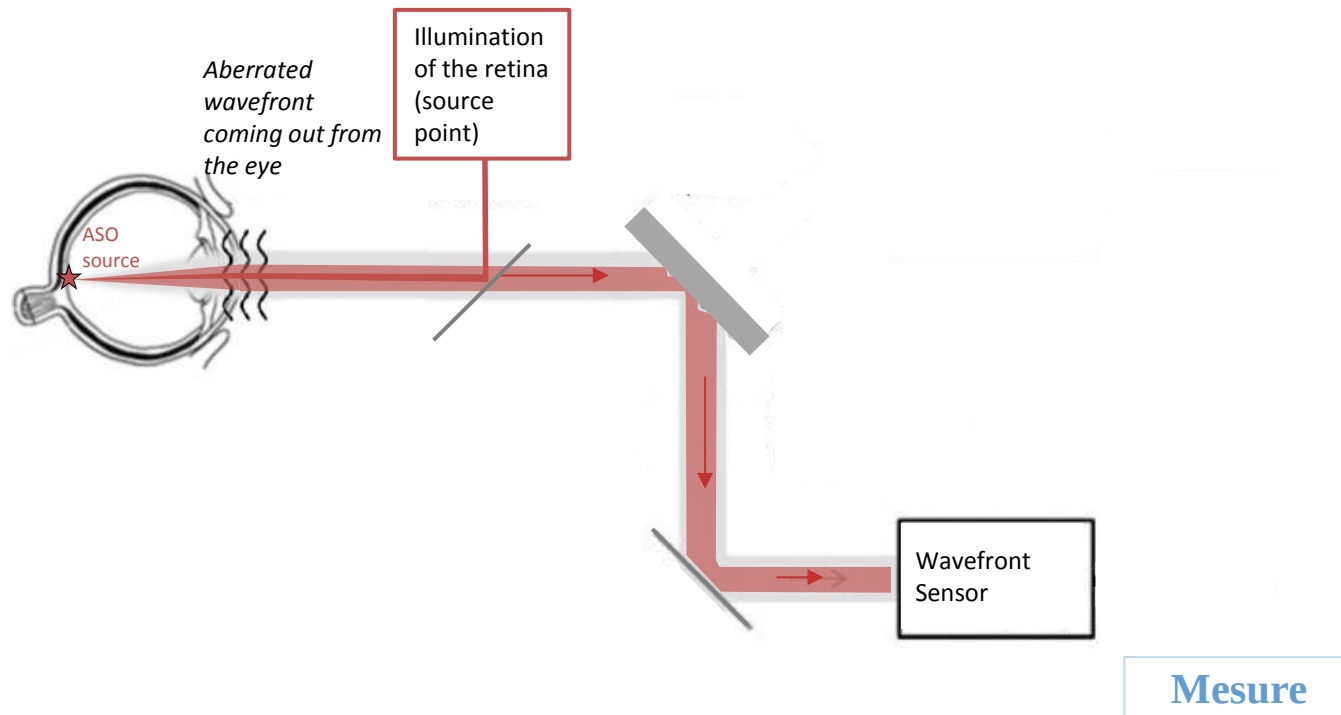
» Real-time aberrations correction by Adaptive Optics



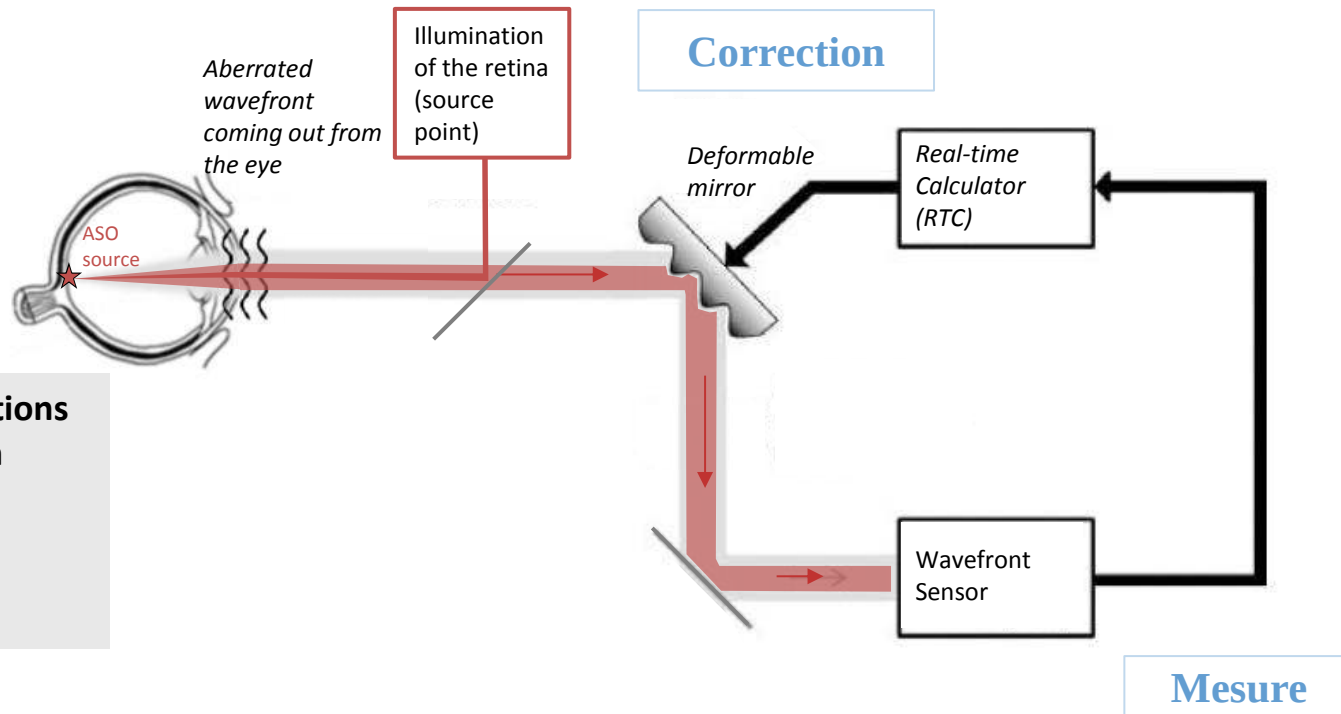
# Laser Photocoagulation assisted by Adaptive Optics



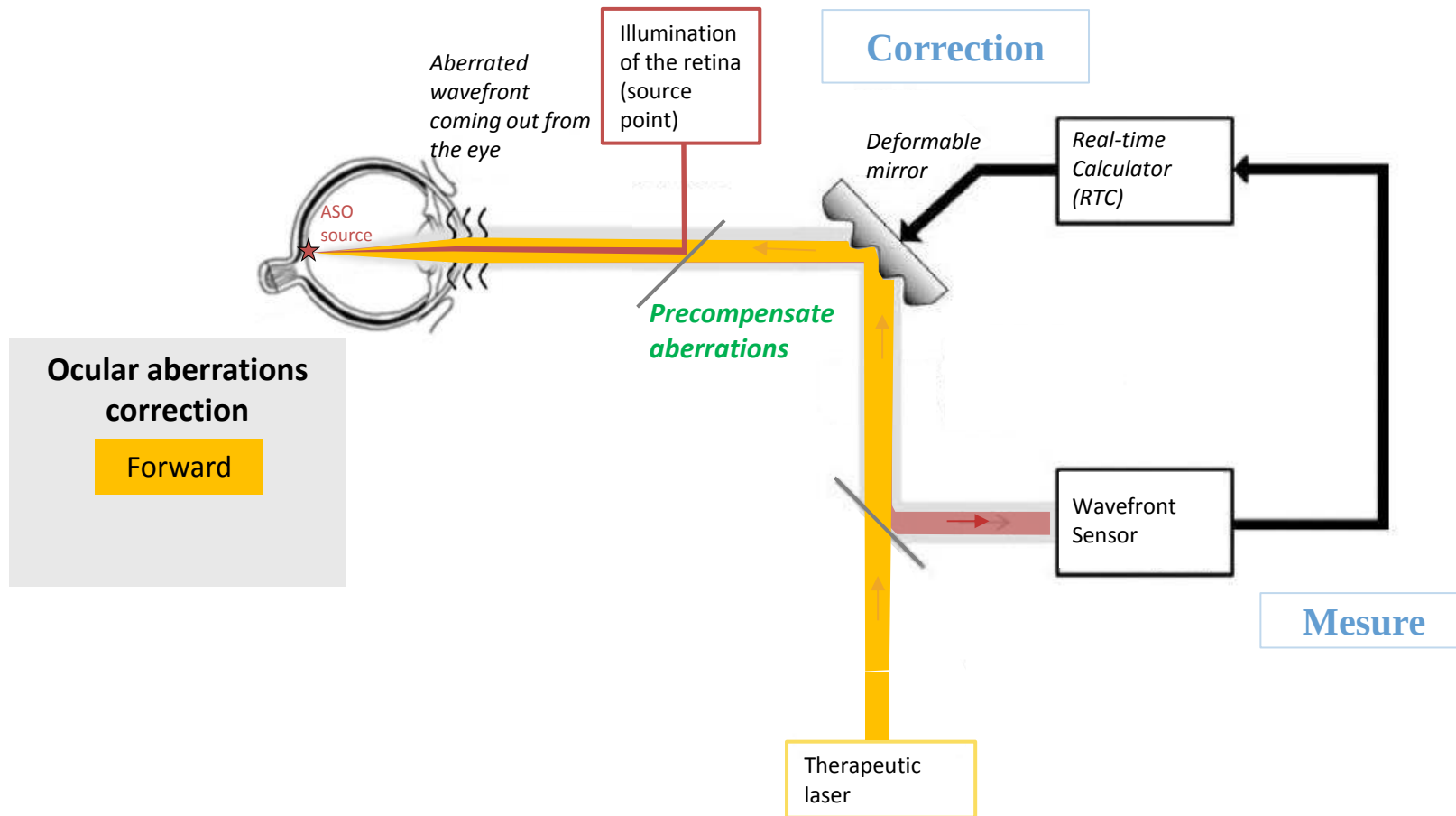
# Laser Photocoagulation assisted by Adaptive Optics



# Laser Photocoagulation assisted by Adaptive Optics

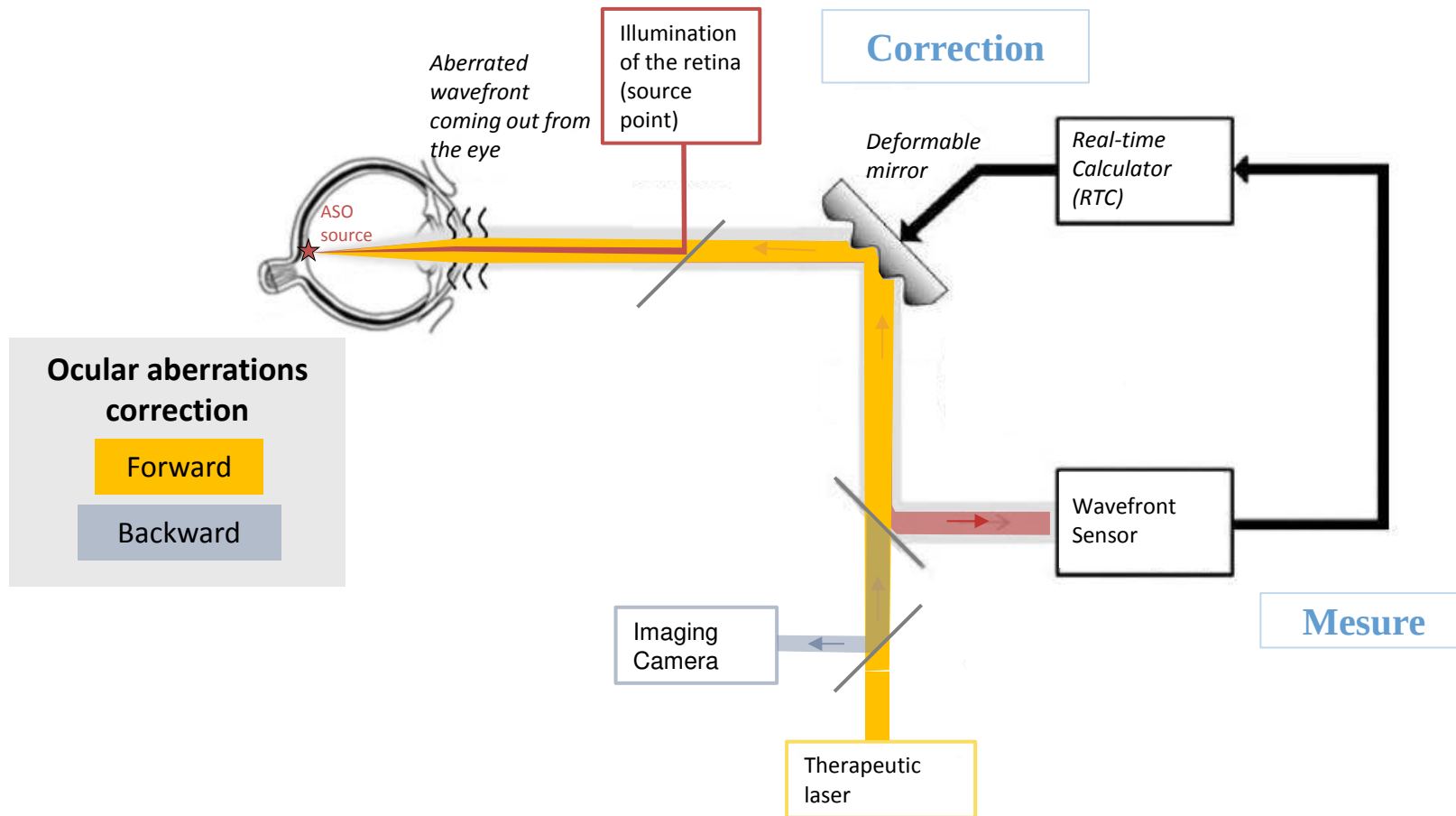


# Laser Photocoagulation assisted by Adaptive Optics

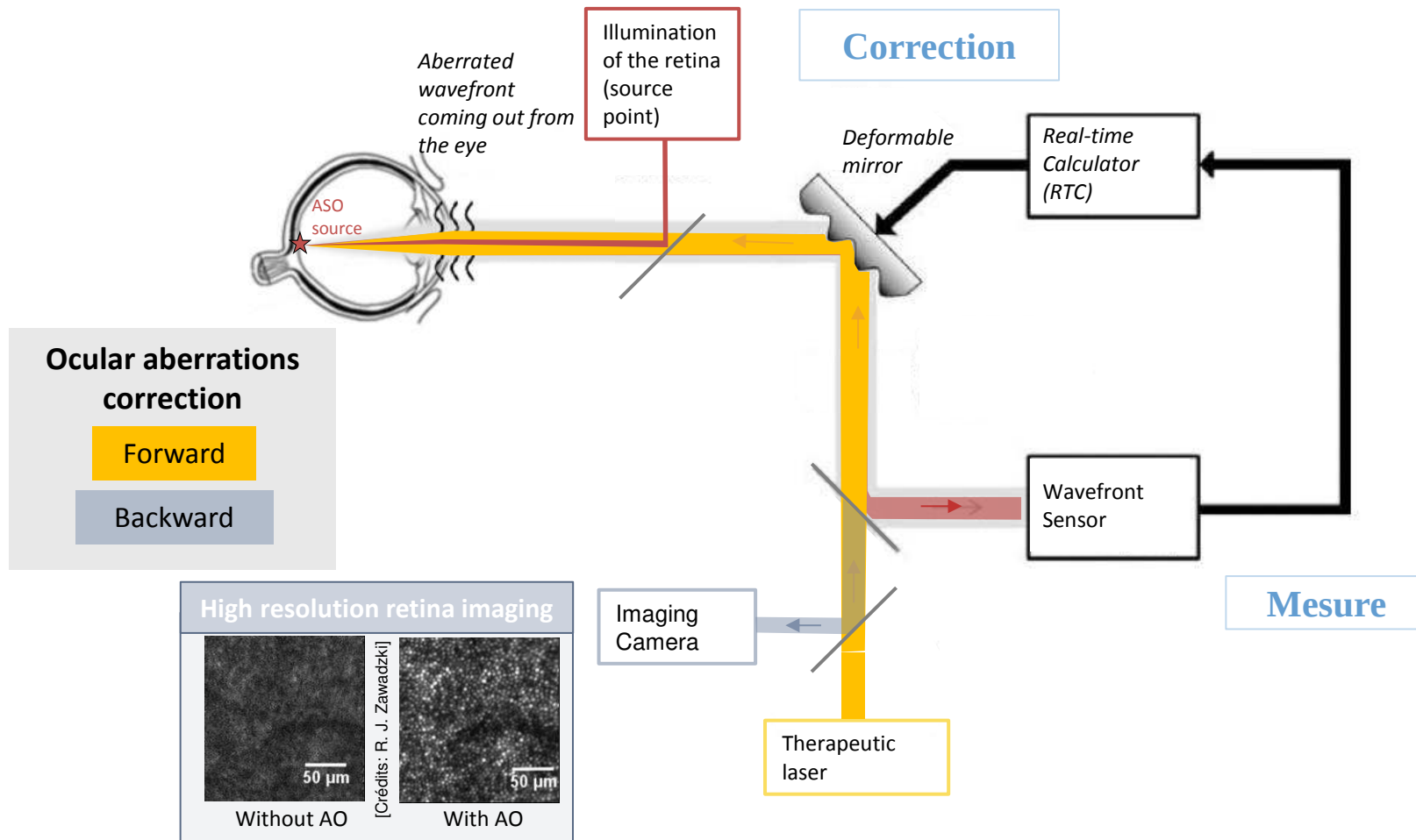




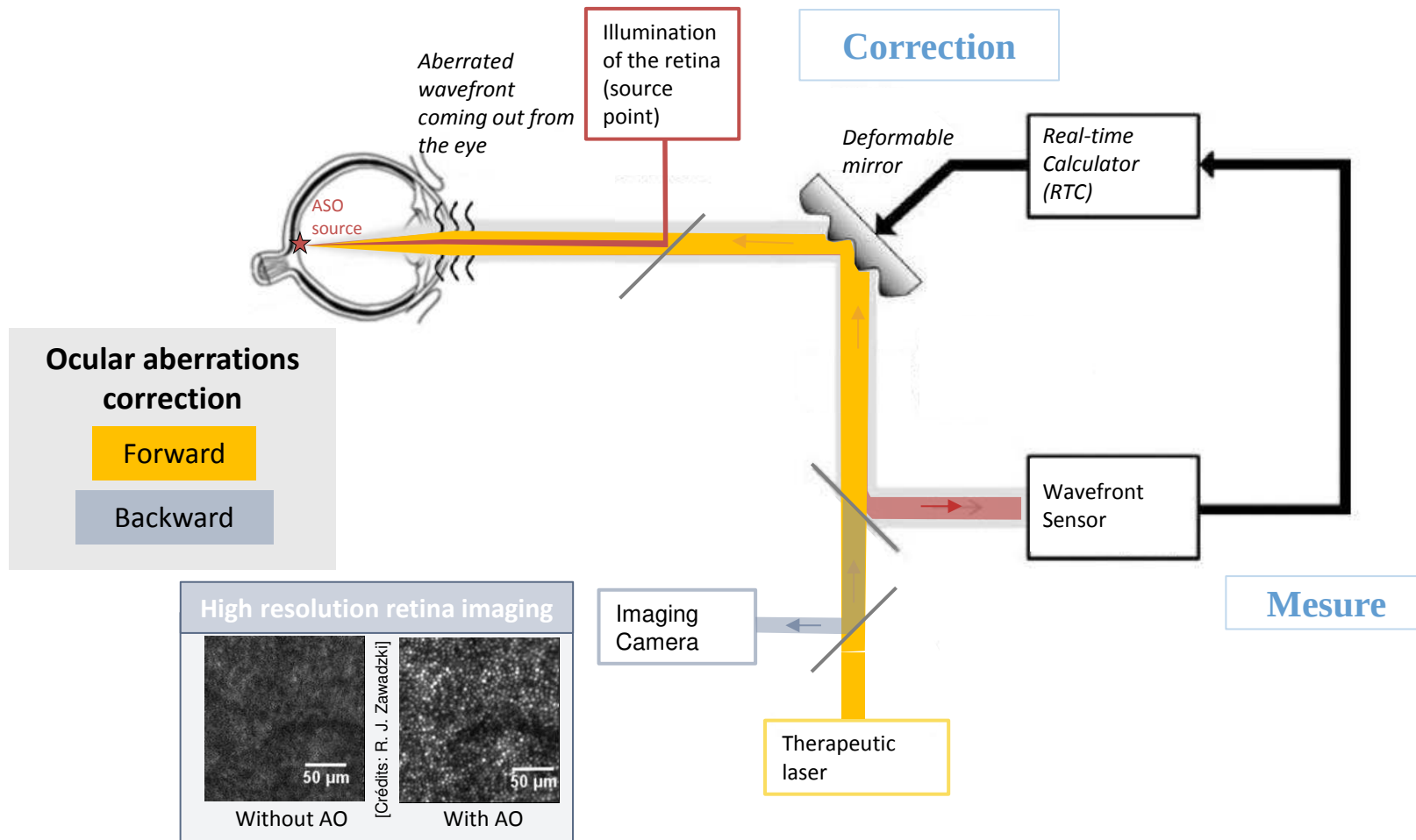
# Laser Photocoagulation assisted by Adaptive Optics



# Laser Photocoagulation assisted by Adaptive Optics



# Laser Photocoagulation assisted by Adaptive Optics



**Retinal surgery and imaging assisted by Adaptive Optics**

# *Laser impact stabilisation, localisation and positioning*

3

2D stabilisation

4

Target identification

5

3D laser positioning



# *Laser impact stabilisation, localisation and positioning*

Stabilisation: eye movements (shifts) estimation by high resolution images correlation

3

2D stabilisation

4

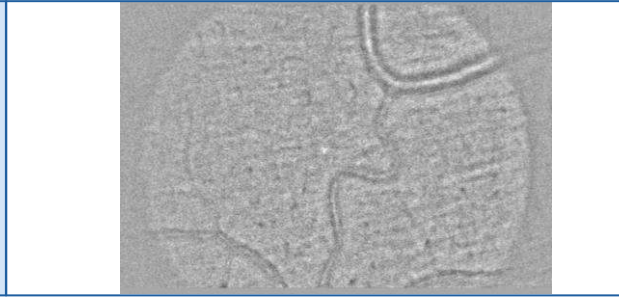
Target identification

5

3D laser positioning

# *Laser impact stabilisation, localisation and positioning*

Stabilisation: eye movements (shifts) estimation by high resolution images correlation



3

2D stabilisation

4

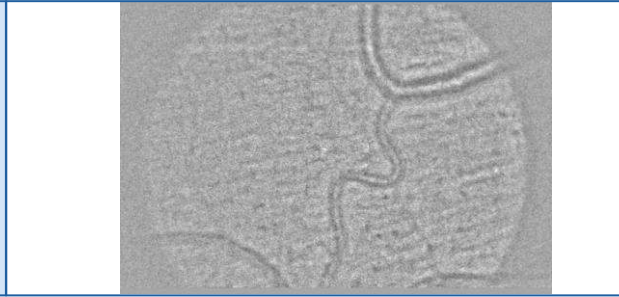
Target identification

5

3D laser positioning

# *Laser impact stabilisation, localisation and positioning*

Stabilisation: eye movements (shifts) estimation by high resolution images correlation



3

2D stabilisation

4

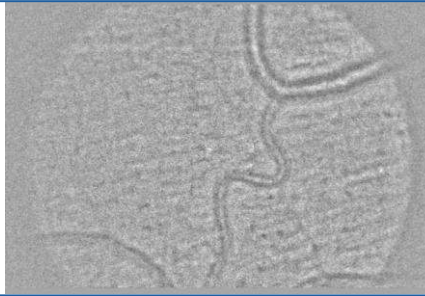
Target identification

5

3D laser positioning

# Laser impact stabilisation, localisation and positioning

Stabilisation: eye movements (shifts) estimation by high resolution images correlation



3

2D stabilisation

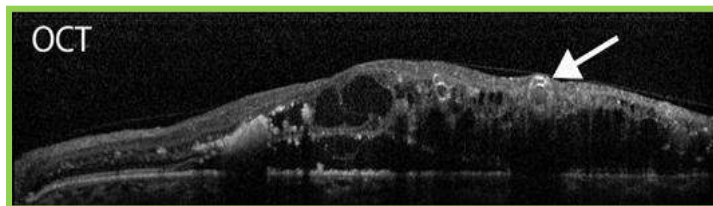
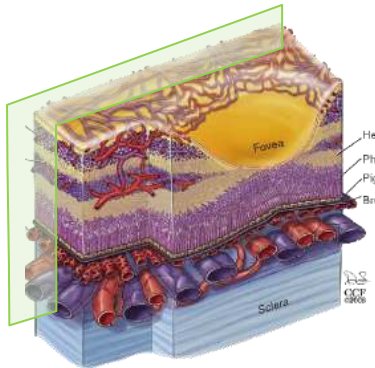
4

Target identification

5

3D laser positioning

Imaging camera on translation stage: localisation & positioning

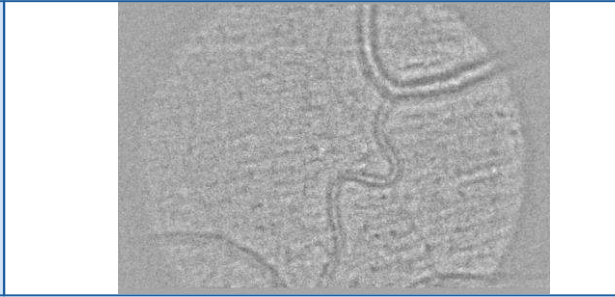


[Images : Paques et al.]



# Laser impact stabilisation, localisation and positioning

Stabilisation: eye movements (shifts) estimation by high resolution images correlation



3

2D stabilisation

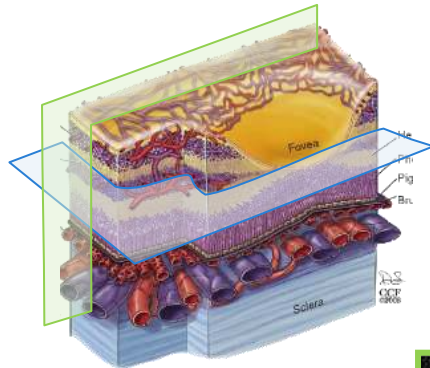
4

Target identification

5

3D laser positioning

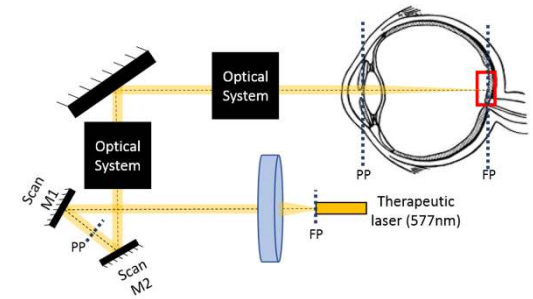
Imaging camera on translation stage: localisation & positioning



[Images: Paques et al.]

# *CLOVIS3D project*

Current laser



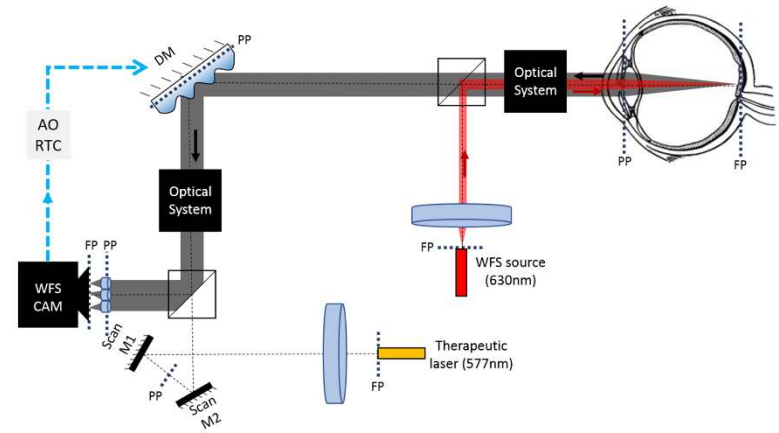
# CLOVIS3D project

Current laser

+

1

3D confinement



# CLOVIS3D project

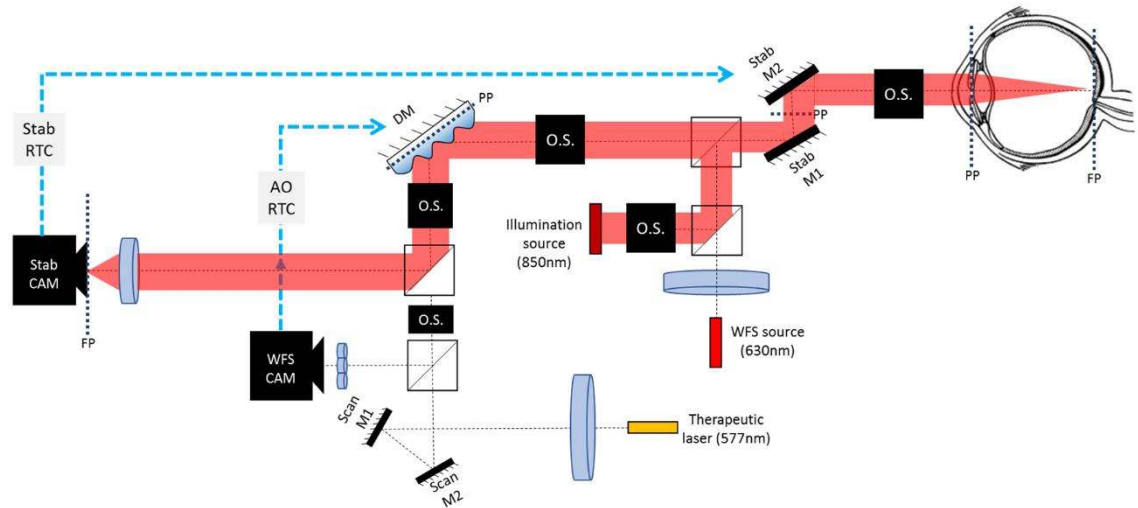
Current laser

+

1 3D confinement

+

2&3 Stabilisation





# CLOVIS3D project

Current laser

+

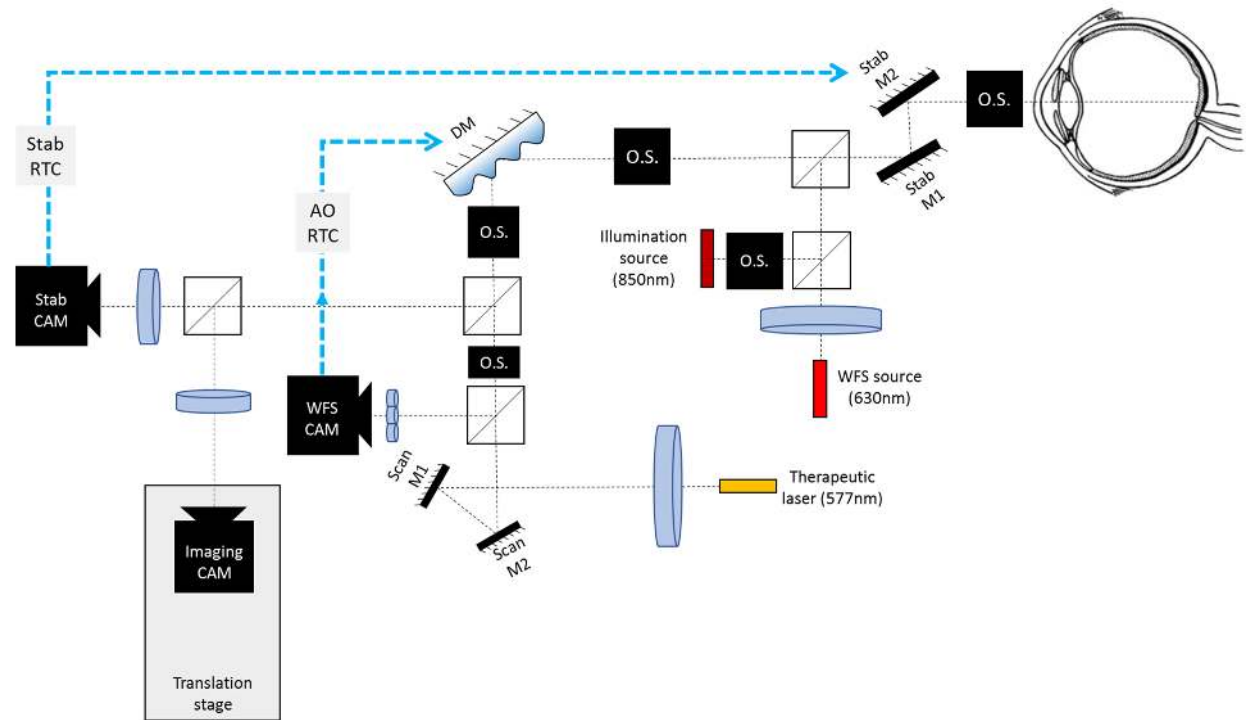
1 3D confinement

+

2&3 Stabilisation

+

4 Target 3D imaging and localisation



# CLOVIS3D project

Current laser

+

1 3D confinement

+

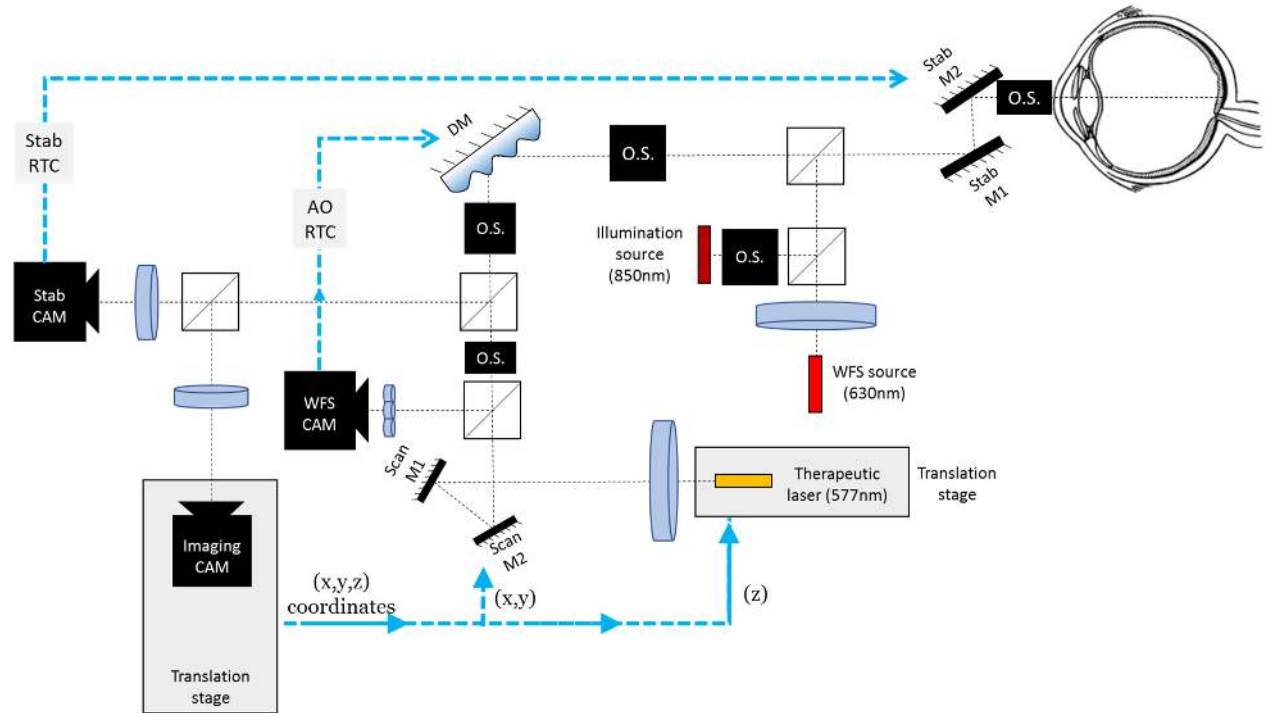
2&3 Stabilisation

+

4 Target 3D imaging and localisation

+

5 3D positioning of the therapeutic laser



# CLOVIS3D project

Current laser

+

1 3D confinement

+

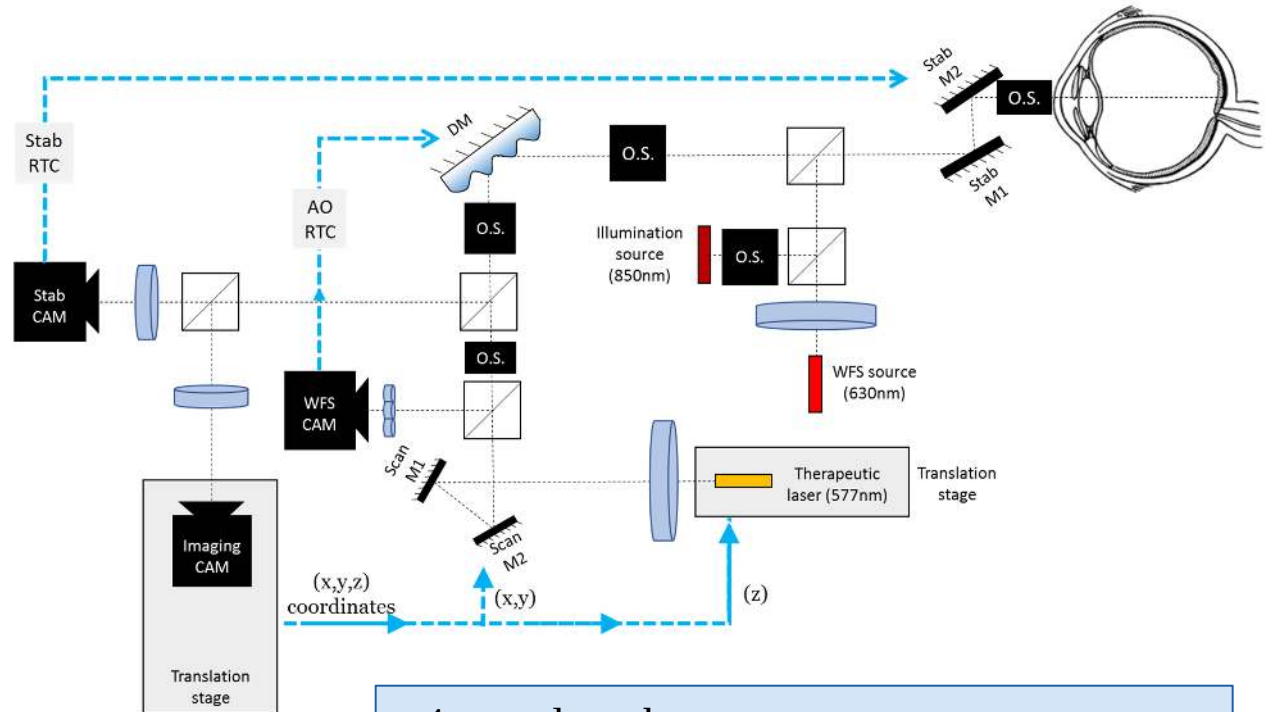
2&3 Stabilisation

+

4 Target 3D imaging and localisation

+

5 3D positioning of the therapeutic laser



- 4 wavelengths
- 1 A.O. system
- 5 imaging systems

Increasing complexity!

# CLOVIS3D project

Current laser

+

1 3D confinement

+

2&3 Stabilisation

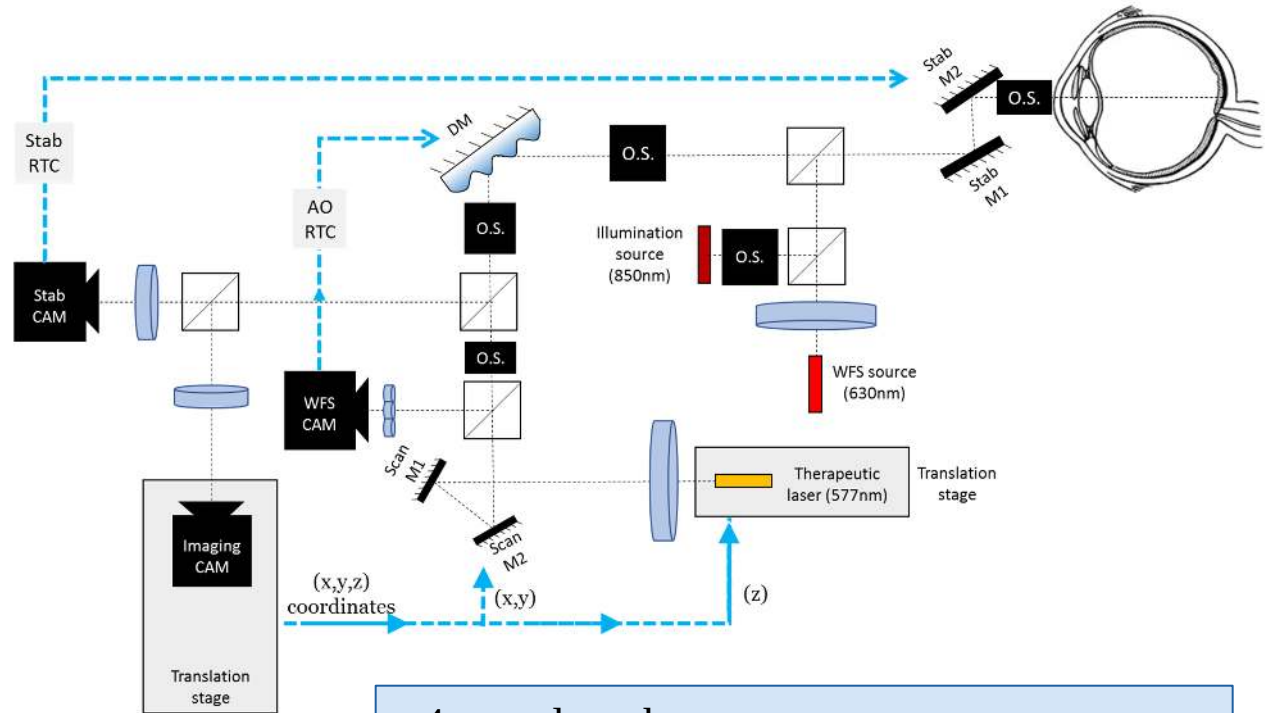
+

4 Target 3D imaging and localisation

+

5 3D positioning of the therapeutic laser

Increasing complexity!

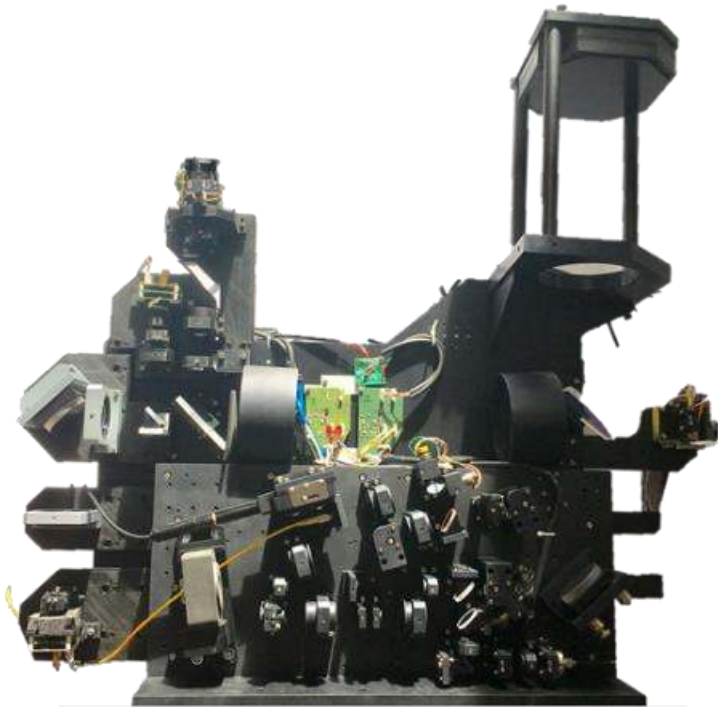


- 4 wavelengths
- 1 A.O. system
- 5 imaging systems

» 1<sup>st</sup> photocoagulation laser system assisted by A.O. for retinal surgery

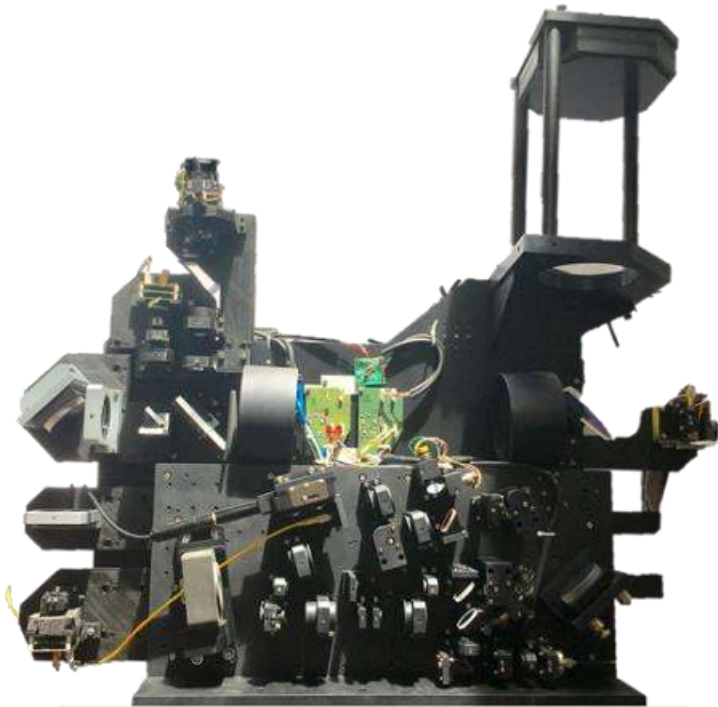


# *CLOVIS3D bench*



Systems dimensions are  
 $80 \times 30 \times 80 \text{ cm (D} \times \text{L} \times \text{H)}$ .

# *CLOVIS3D bench*



Systems dimensions are  
 $80 \times 30 \times 80 \text{ cm (D} \times \text{L} \times \text{H)}$ .

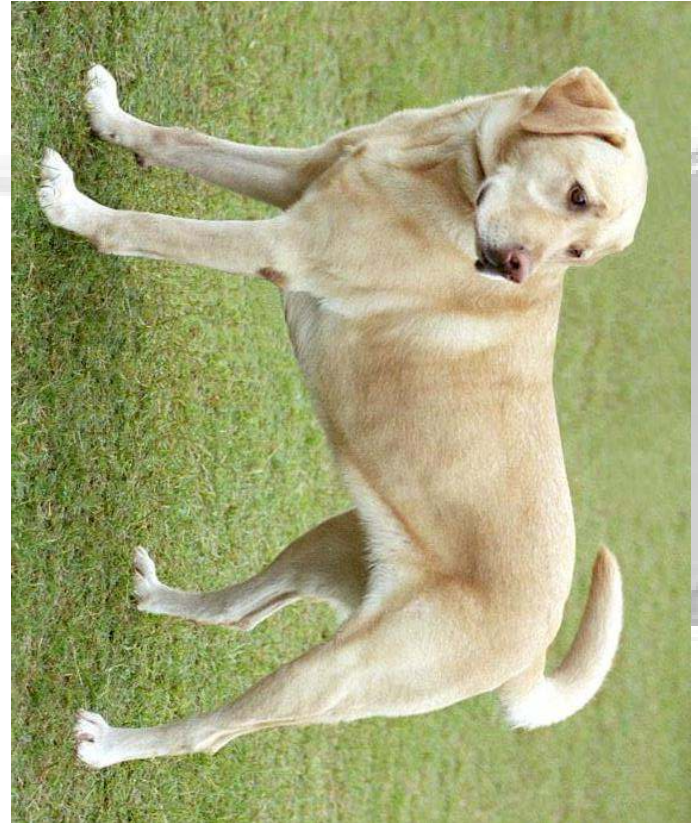


**NORDEN** table à rabat

# CLOVIS3D bench



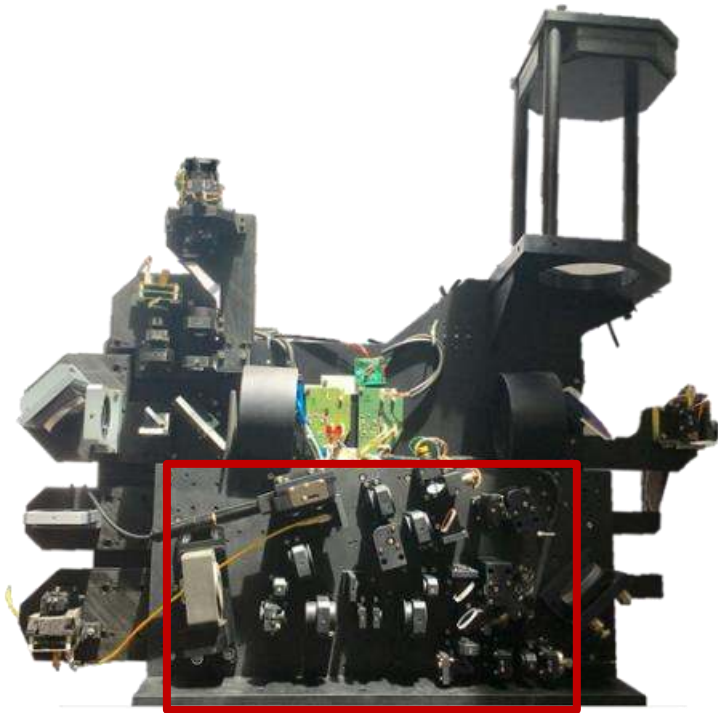
Systems dimensions are  
 $80 \times 30 \times 80 \text{ cm (D} \times \text{L} \times \text{H)}$ .



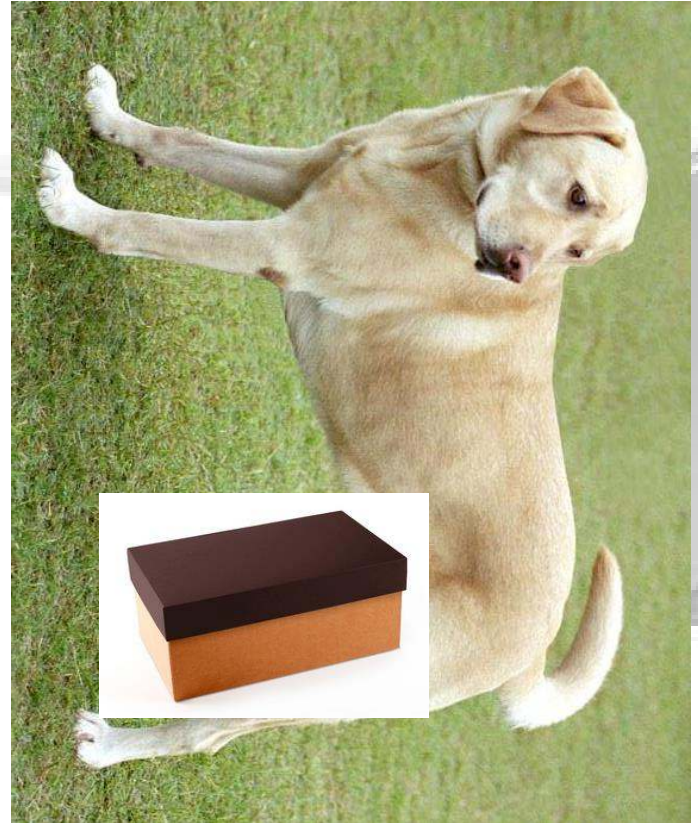
**NORDEN** table à rabat



# CLOVIS3D bench



Systems dimensions are  
 $80 \times 30 \times 80 \text{ cm (D} \times \text{L} \times \text{H)}$ .



**NORDEN** table à rabat



# *Objectives*

# Objectives

» Optical integration of the bench and coupling of all functions

# Objectives

» Optical integration of the bench and coupling of all functions



» Validate laser confinement (3D): in situ characterisation of laser photocoagulation

» Laser-tissue interaction: energy – confinement – beam-shaping

# Objectives

» Optical integration of the bench and coupling of all functions



» Validate laser confinement (3D): in situ characterisation of laser photocoagulation

» Laser-tissue interaction: energy – confinement – beam-shaping

» Validate confinement, stabilisation and localisation (3D) with pathological eyes



# Objectives

» Optical integration of the bench and coupling of all functions



» Validate laser confinement (3D): in situ characterisation of laser photocoagulation

» Laser-tissue interaction: energy – confinement – beam-shaping

» Validate confinement, stabilisation and localisation (3D) with pathological eyes

» Extend CLOVIS3D bench use for stimulation: neurovascular coupling

# Objectives

» Optical integration of the bench and coupling of all functions



» Validate laser confinement (3D): in situ characterisation of laser photocoagulation

» Laser-tissue interaction: energy – confinement – beam-shaping

» Validate confinement, stabilisation and localisation (3D) with pathological eyes

» Extend CLOVIS3D bench use for stimulation: neurovascular coupling

Thank you!

# Objectives

» Optical integration of the bench and coupling of all functions



» Validate laser confinement (3D): in situ characterisation of laser photocoagulation

» Laser-tissue interaction: energy – confinement – beam-shaping

» Validate confinement, stabilisation and localisation (3D) with pathological eyes

» Extend CLOVIS3D bench use for stimulation: neurovascular coupling

Thank you!

Questions?